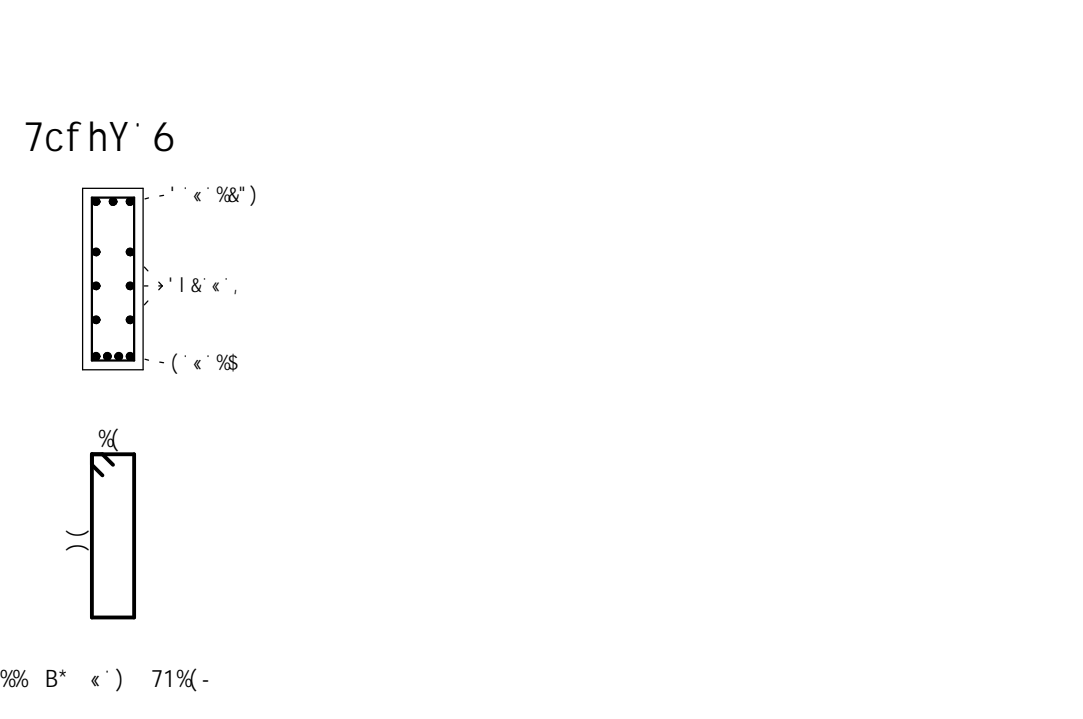
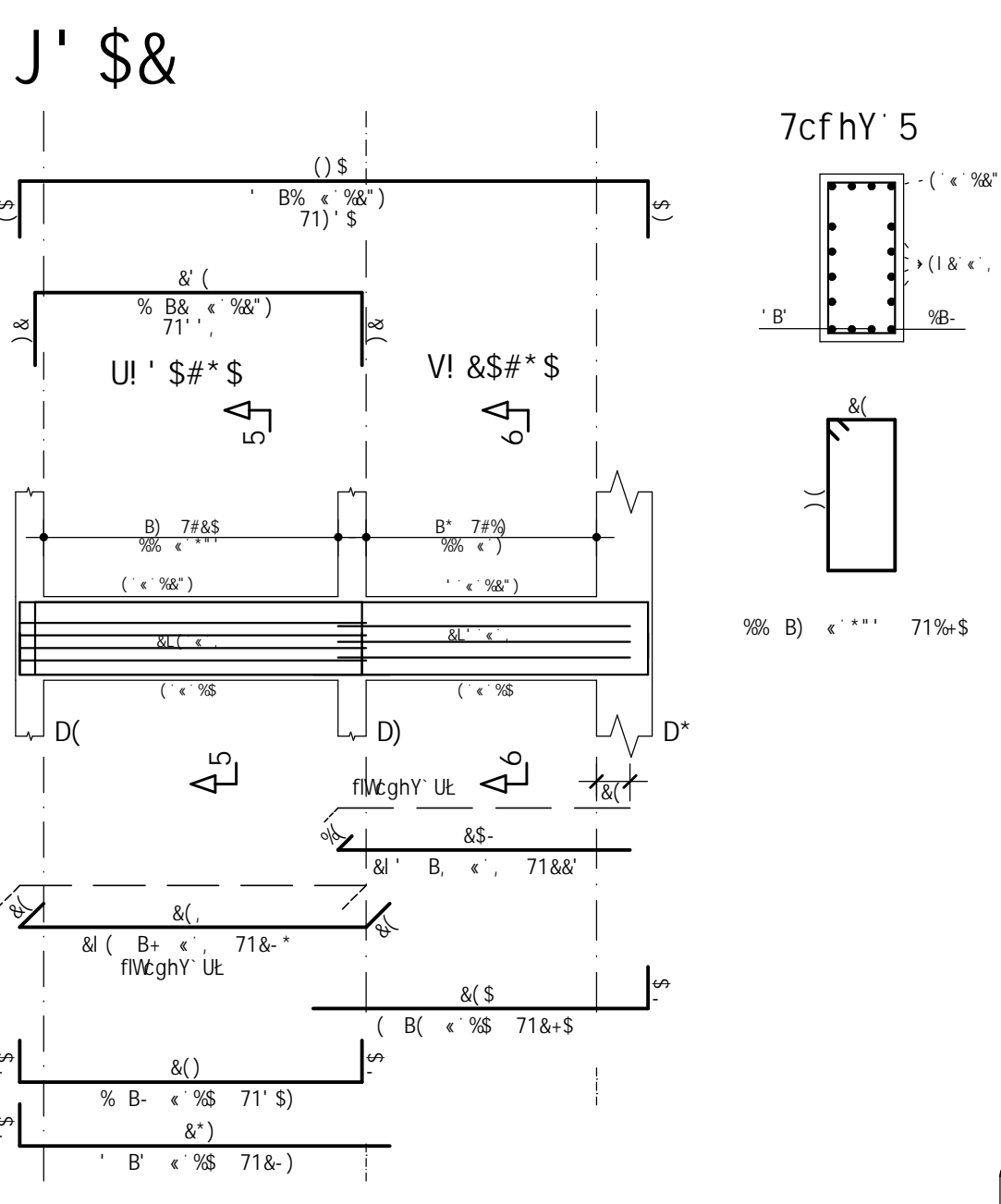
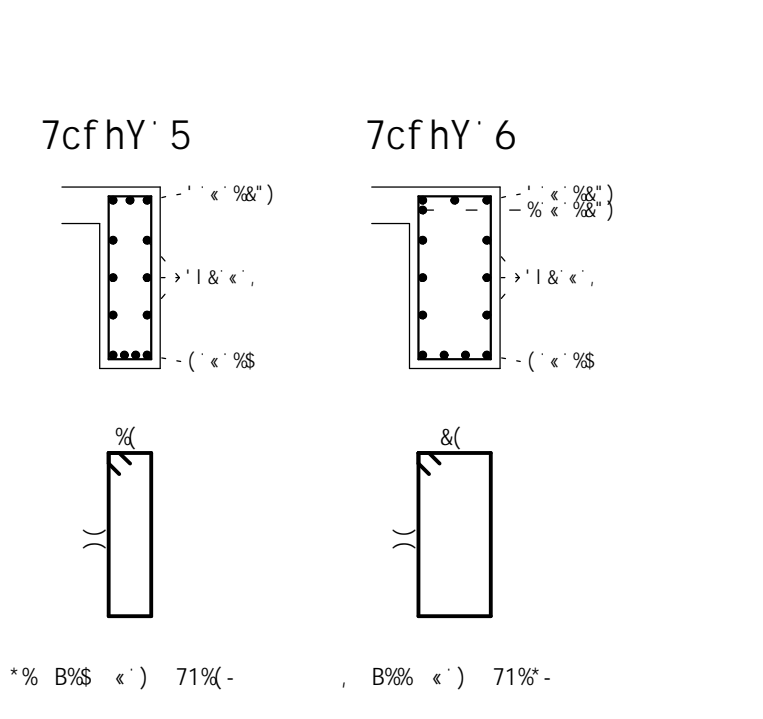
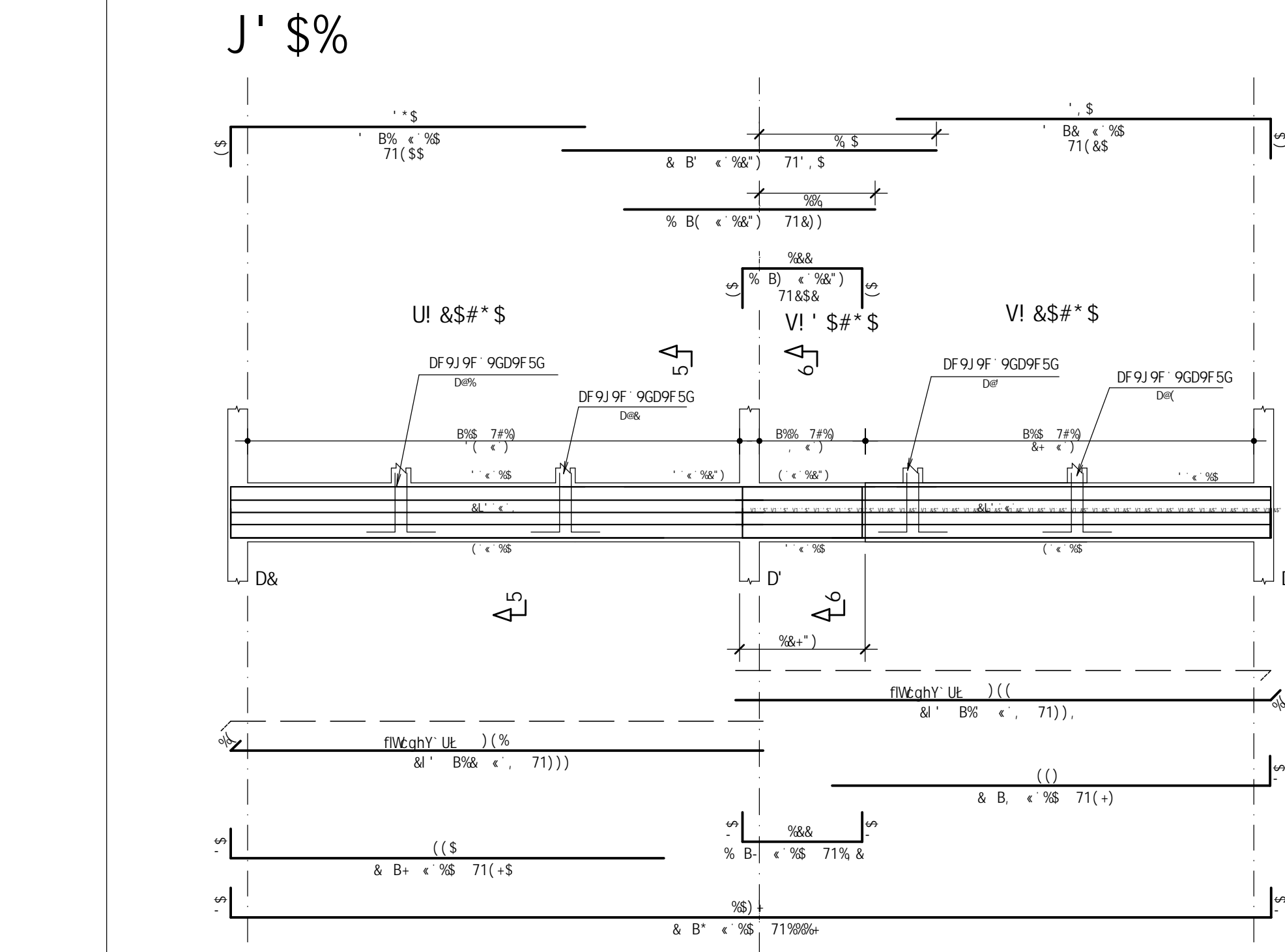


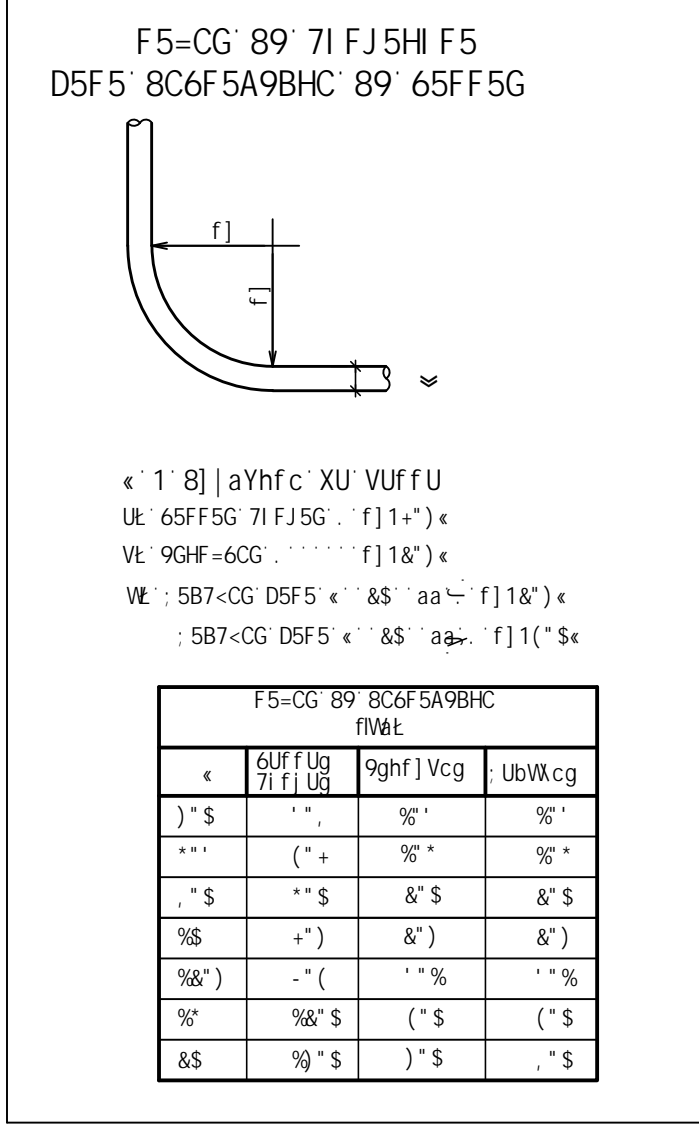
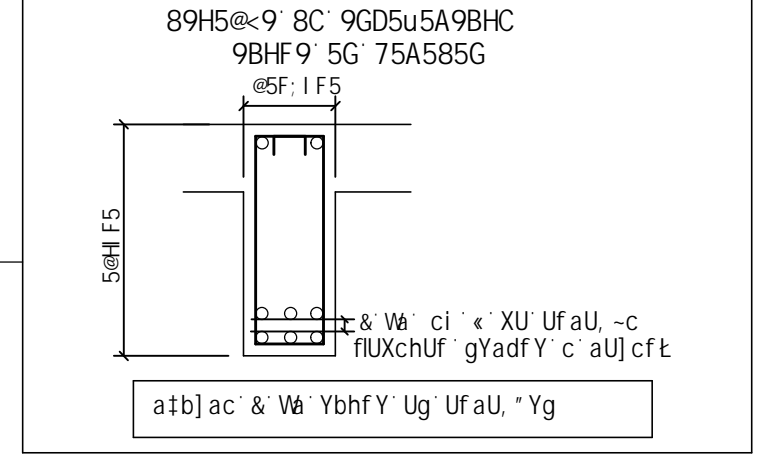
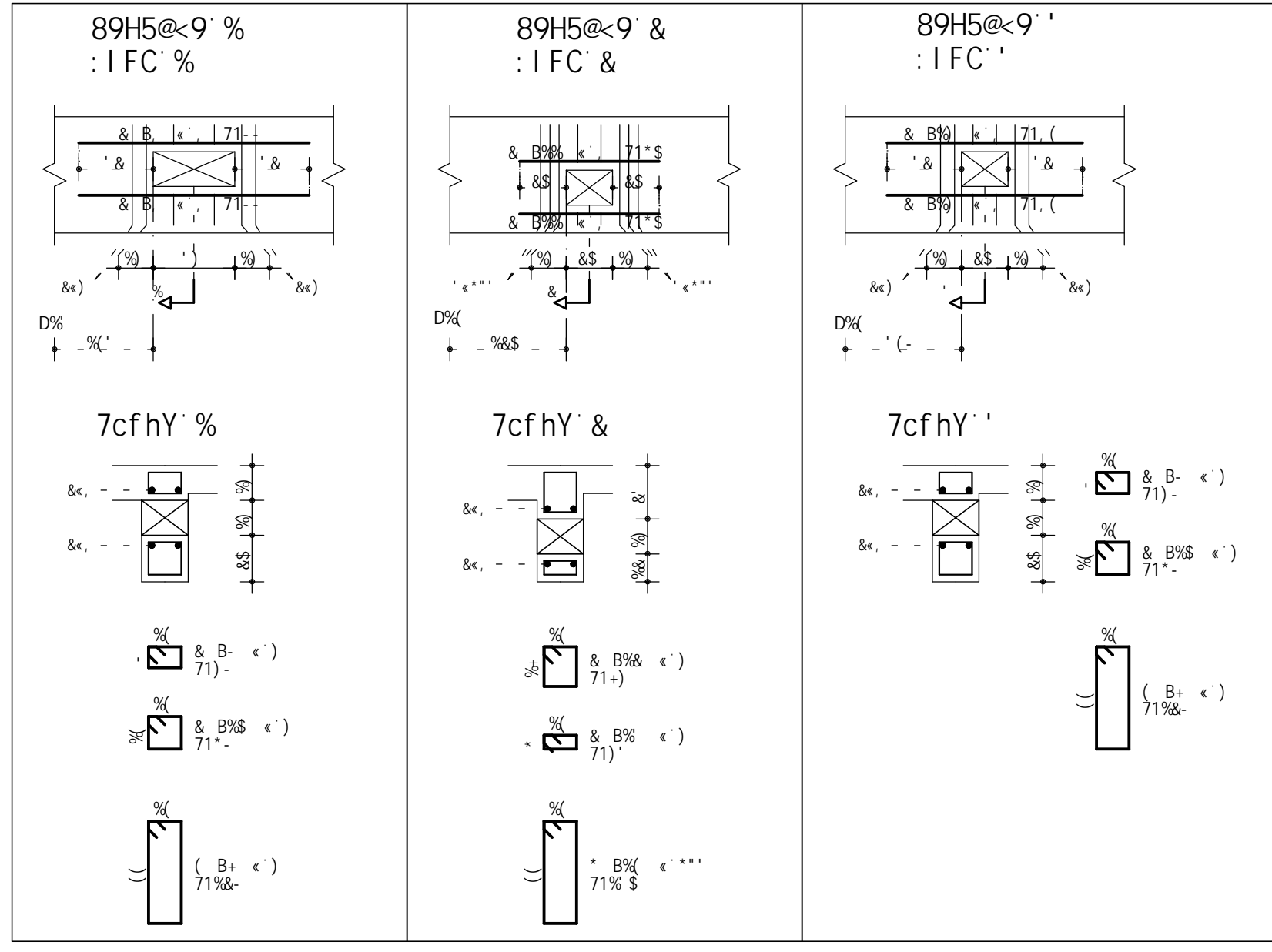
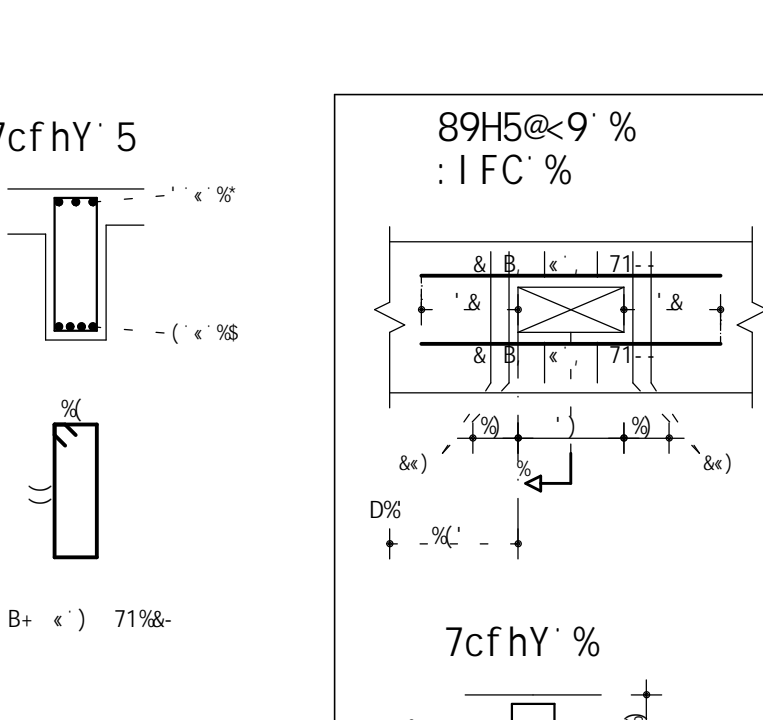
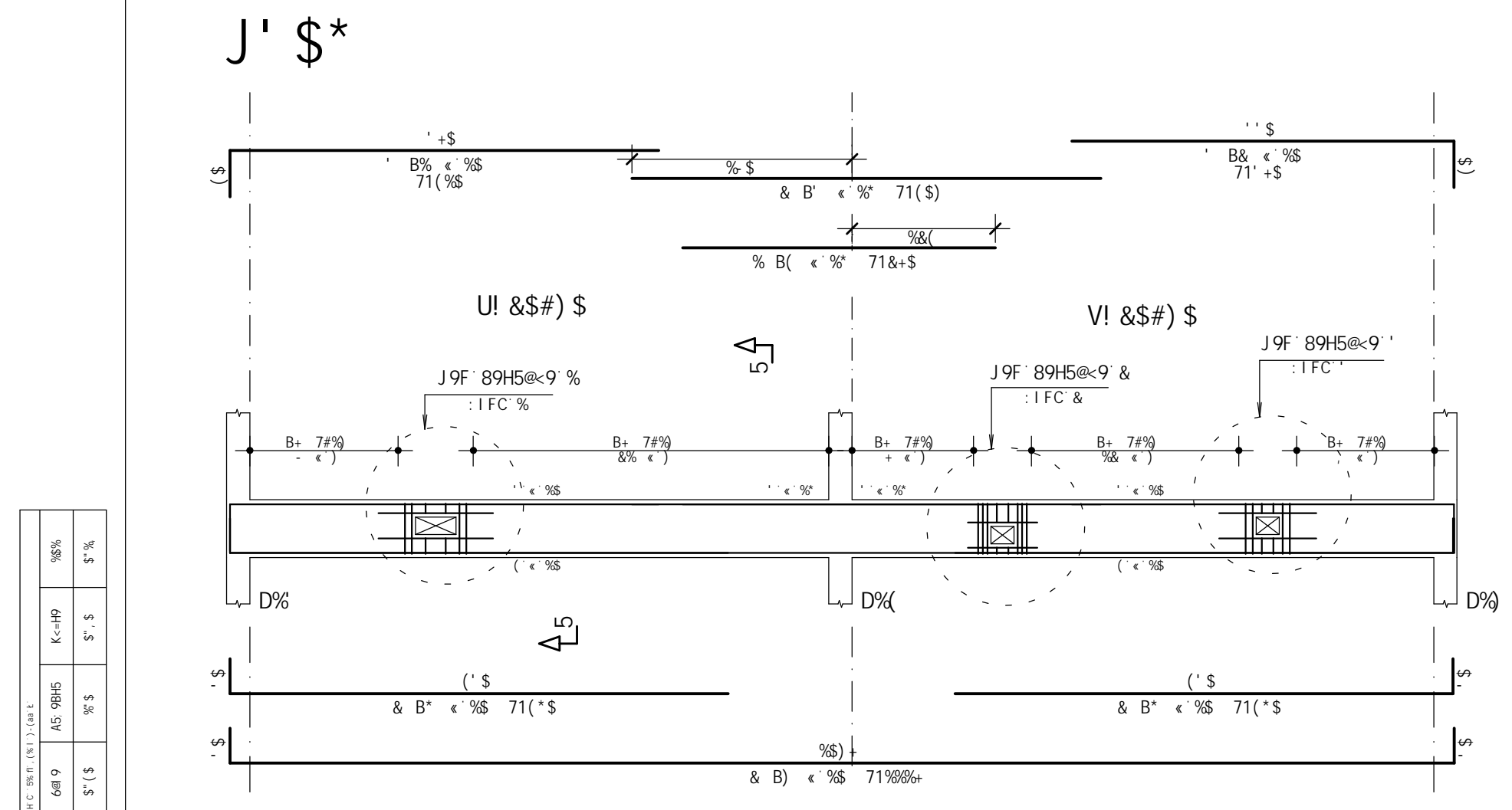
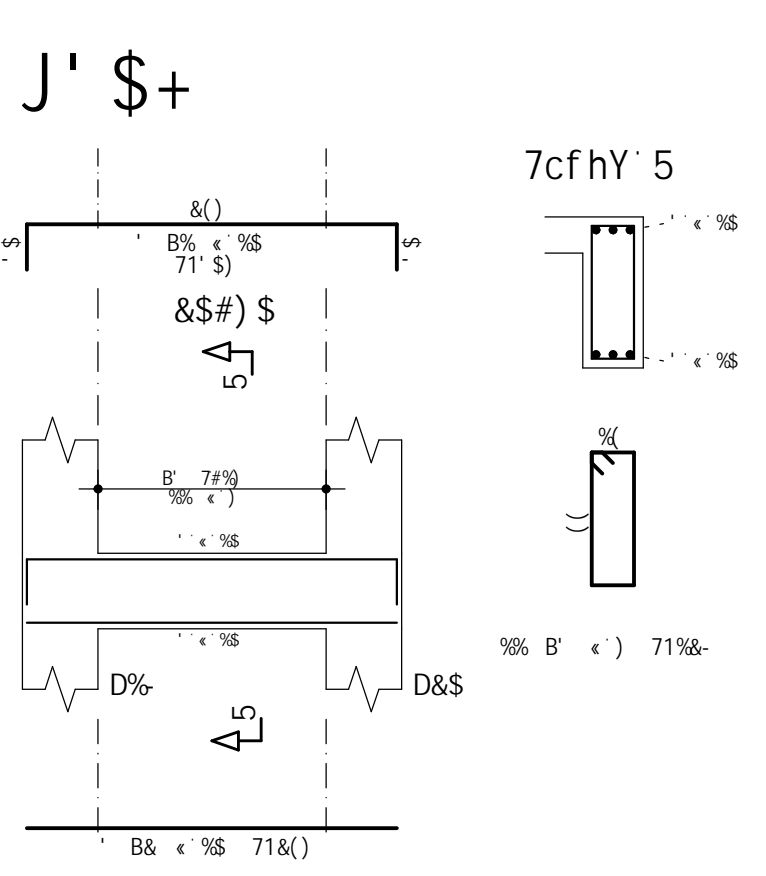
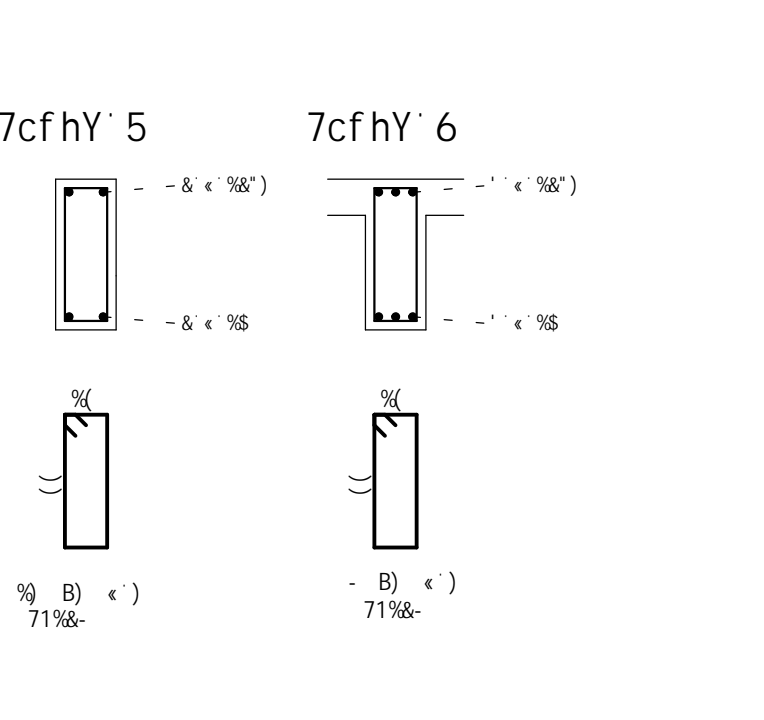
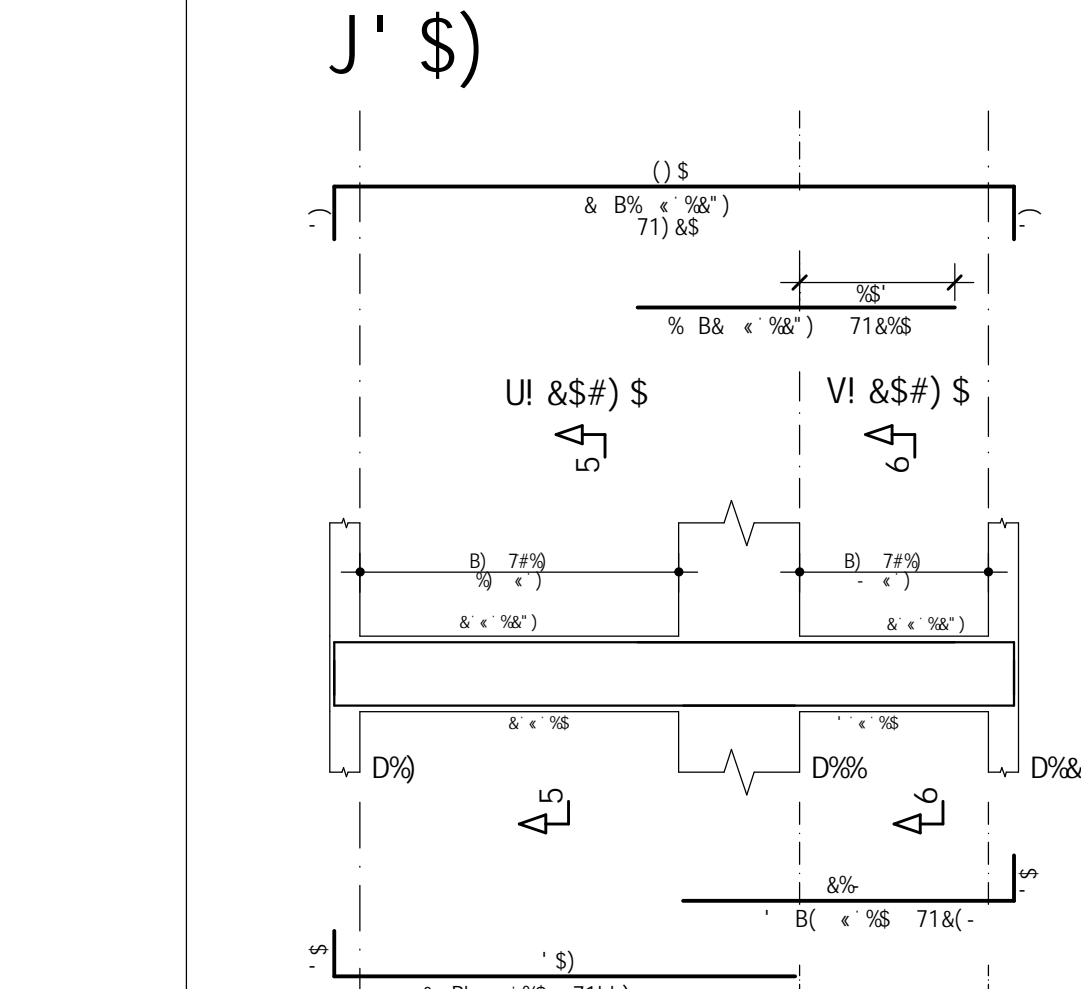
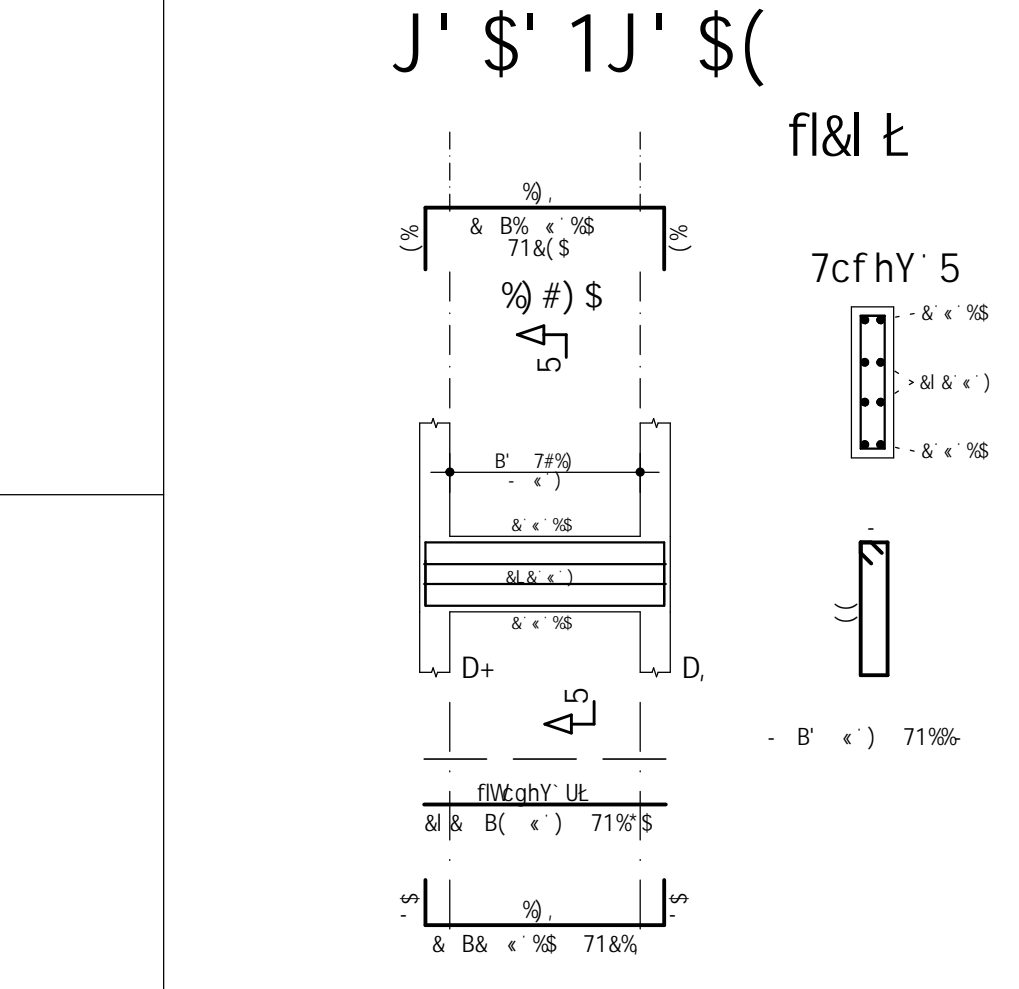
7 C B 1 1 1 5 3 C B 5 C 0 0 B 5 G 1 1 1 C 1 A 5 B C 5 B 1									
---	--	--	--	--	--	--	--	--	--

50F57<B 65F60G5 9B 9B<5F<5 9 7DC>9HC D9 77B 9G4F 1S5 D9H 1C 9B9&5& 9B< 5S 1& 5



F9: 9FaB7=5G
 % DFC>9HC 5FEI=H9HbB=7C.
 % 5FEI A7@9 7I 1 U 1 1 U d-cl 7CADF 1Y S 1 1 U 1 ghYgX 1 1 Y fgcqz 2 1 WZ1 bxcYz 1 W V 1 U 1 Bk:
 % 5H HCF: A=7-9@99 FCT<5 6CF: 9G 1 751 5% *8&S
 &* GCB85: 9A 1 A<A GCB85: 9BG
 % F@ 1 & 1 1 F9H5Hf<C 89 GCB85: 9A 1 DFCACHF<5G 89 >1 GH=U5 89 ACBH9G 7@5FCG
 % 1 FCG GDS% 5 GDS
 % F9GDCBGA 9@: FC V<C 5J 9@5F A5F<B<C 1 7F95 9& 1 (% #8

BCH5G
 \$% B=A9BGE9G 9A 79B9BA9HF CQ2 9@9 5U@9G 9A A9HF CQ
 \$&* 7CB7F9HC 9GH1 HI F5@
 % 7721 & ADU/ 7CBGI AC 89 7-A9BHC 21& S\$ \$7: #a
 \$* 5HCF a 1 5#7-A9BHC AaL=AC. S\$* \$
 S(* 7@5GG9 89 5 F9GG-J=85B9 == 1 1 F65B5*
 S*) A@81 @C 89 9@5GH<7-B5B9 H5B: * 1 B=7=5@ = 1 5@ 5 \$ \$\$\$ ADU
 \$** DFC7989F 5 7I F5 7CB CFA9 B@F%(- 1 %
 \$* DFC7989F 5 89G CFA5 9 5 F9H=F5B5 8C 9G7CF5A9BHC 7CB CFA9 B@F %(- 1 %
 \$* 5 9L97I uEC 85 9GH1 HI F5 89J 9Fa 7CBH5F 7CA C 57CAD5B<5A9BHC 89 1 A
 % H97BCHC 4GH5 89 7CB7F9HC
 \$- C 9B 9B<9<F C F9GDCBGA 9@ D9@5 C@F5 89J 9Fa C698979F CQ
 % F97CA9B85UE9G 85G BCF A5G Hv7B=75G 5D@=7AJ 9-G2 89@-75B8C 9GD97=5@
 % 5H9BuEC CQ G9 1=BH9G 5H-J=85B9G
 \$- % 7CB7F9HC DF9D5F C2 7CBHFC@92 F979@=A9BHC HF5BGDCFH92
 % @5Bu5A9BHC2 589BGS A9BHC 9 7I F5/
 \$- % & : @FA5 7CB: 9FaB7=5 85G A9@=85G 9 DCG=U@9G2 @=AD9M52
 % 9GH5BE1 9=85B92 GSH F5uEC 85G : @FA5G 56GCFJ 9BHPG 9F9H=F5F 9L79GGC
 % 89 a 15L2 7I =85B9C 7CA C 1 GC 8CG 89CAC@85BHPG 9 F9H=F5B5 85G : @FA5G
 \$- % 5FA5uEC. @=AD9M52 ACBH5: 9A2 7C@F=A9BHC 9I GC 89 9GD5U5BFC9G
 % D9@GH+7CG 589E1 5BQGL2 9 5F5BH<5 85 DCG=uEC 85G 5FA5 F5G 5BHPG 9
 % 8I F5BH9 5 7CB7F9H5 9A
 %\$ 7C@F=A9BHC A8B=AC 85 5FA5B1 F5
 % @5>9G1&2 V@/ J= 5G 9 D=@5F9G1 25V@/ 6@7CG1 25V@/ 1 1 B85uEC1(25V@
 % 1 C@F5 7CA 7CBHFC@9 F= CF CCG 89 E1@=85B9 9I=H9A * 1 * 1 B@F 9@% #8\$% L
 %\$ F97CA9B85I G9 E1 9 CG A5H9F<5-G 95uEC 9 7CB7F9HC 1 1 H=@N58CG B9GH9
 % DFC>9HC 89>5A G1 6A9H<8CG 5 9BGS<CG H@7B@B@=7CG
 %\$ DF9J 9F @F9B5 9A 9@C 1=AD9FA95@=@N5uEC D5F5 5G 7CFH<B5G 9 9@9A9BHC
 % 9A 7CBH5HC 7CA C G@H<
 % 7CB 9F=F A9@=85G BC @C75@
 % 1 @C75F 5 C@F5 7CB CFA9 =AD@5BH5uEC



5DFCJ 58C D9@5 5Ba@=G9 89 7CB: CFA=85B9.	7F95.
FH 1 G=@ 5B5 1 5@H=9F= 89 75FJ 5@<C	** 9B@#8
9L9 \$S DFC>9HC 9L97I H=JCl @=7=H5uEC C6F5	9.=7@7=5 %(\$S- #&&
H=DC F9J	89G7F=uEC 89G9B<C 85H5
F9J=GE9G	
A=B=GHV=F<C: D1 6@=7C 8C 9GH58C 89 A=B5G 9F5=G G989 85G DFCACHF<5G 89 >1 GH=U5 85 7CA5F75 89 ACBH9G 7@5FCG 9B89F 9Uc.	aF95 9HFF9BC. (1 a&
5J9B=85 7I @5 A5B: 569=F52 1 2 65@=FFC G5BHC 9LD98=HC2 ACBH9G 7@5FCG	aF95 7CBGH1 a85. % 1 2 & a&
DFCDF=9H&F=C.	7BD>. &\$*- +)% \$)+\$S\$% ()
DFC7I F58CF=5 9F5@ 89 >1 GH=U5 8C 9GH58C 89 A=B5G 9F5=G	
DFC>9HC 89 9GH1 HI F5 89 7CB7F9HC 5FA58C	
9ADF9G5.	7BD>. \$*** \$** %9@ #\$\$\$% \$S
9B 9B<9<F C: D1 6@=7C 8C 9GH58C 89 A=B5G 9F5=G 7F95 1 \$ \$ \$ I A: 9.=7@7=5 DFC>9HC 9 7CBGI @HCF=5 @H85 F9GDCBGA 9@ Hv7B=7C.	7F95. +)% +) (#8
5@9Hv=5 9GFF5 56I F57<=8 7F95. 1 +)% +) (#8I A:	
7CBH9 8C. 5FA5uEC 89 J= 5G 1 c 1 D5J=A9BHC 1 \$%\$ \$	85H5. %(\$S- #&& 9C75@5. %) \$4% 8) : C@<5. &&# 1 -