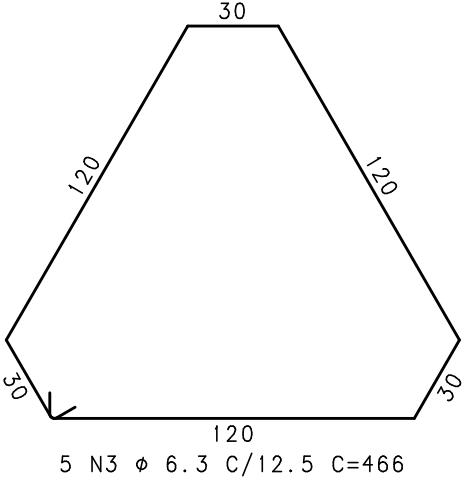
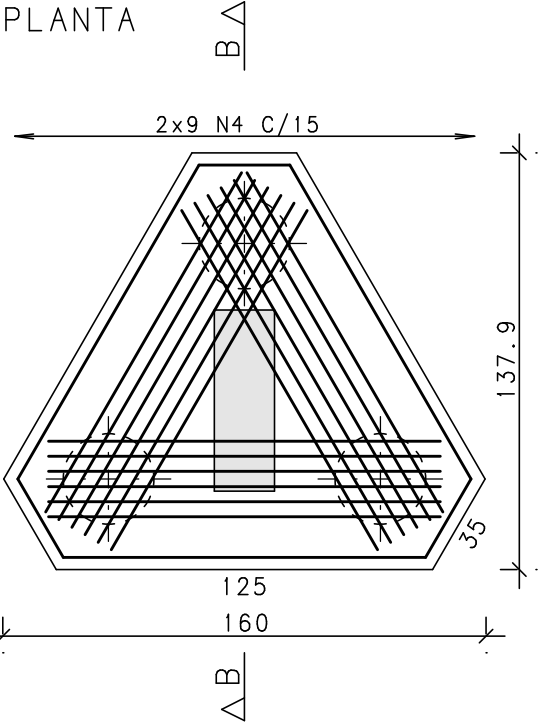
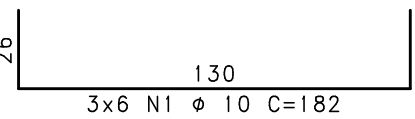
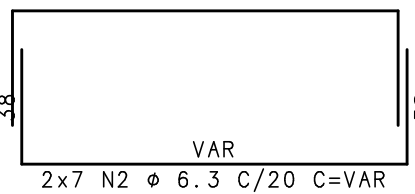
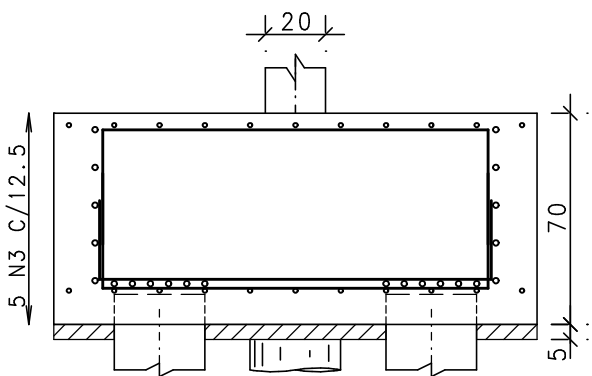


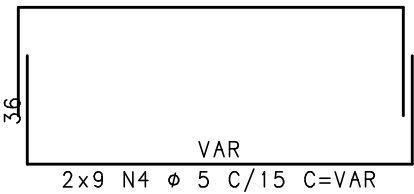
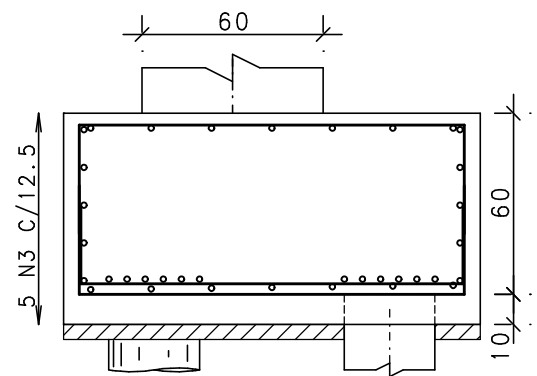
B19
(ESCALA 1:25)



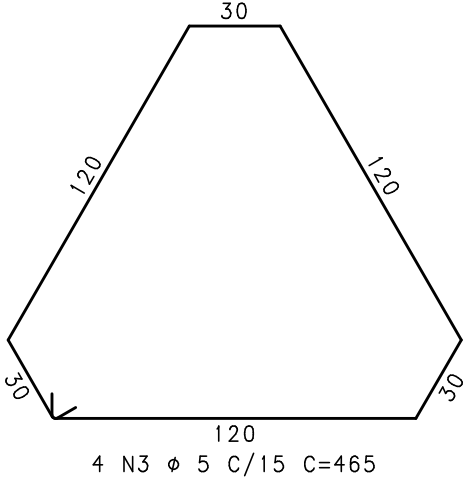
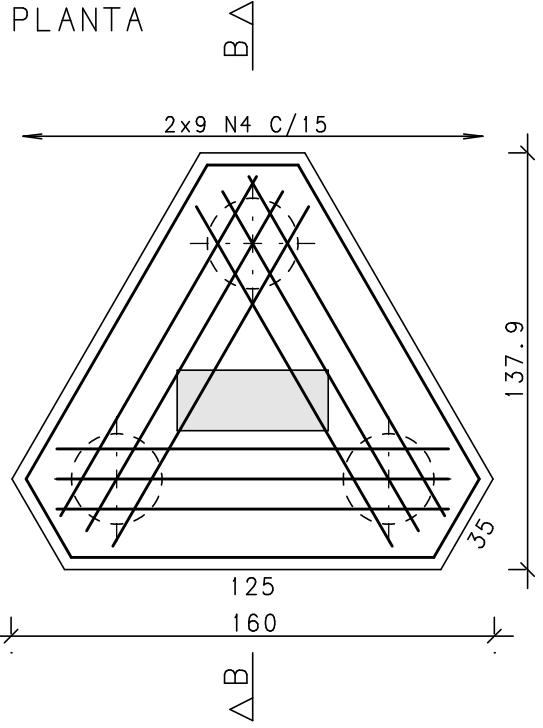
CORTE A - A



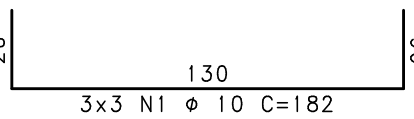
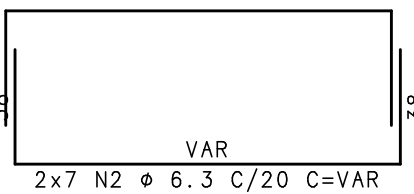
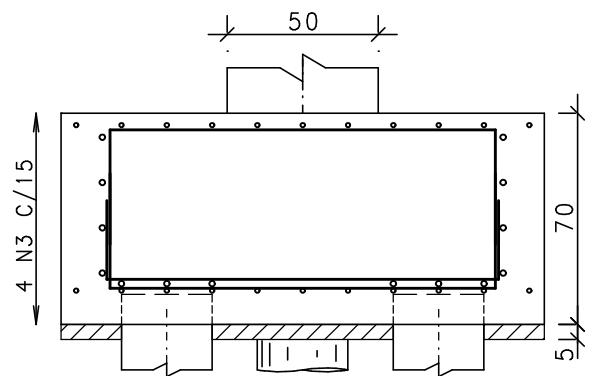
CORTE B - B



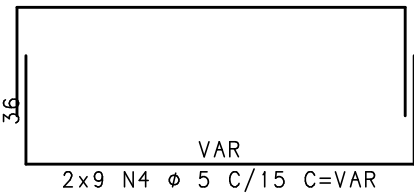
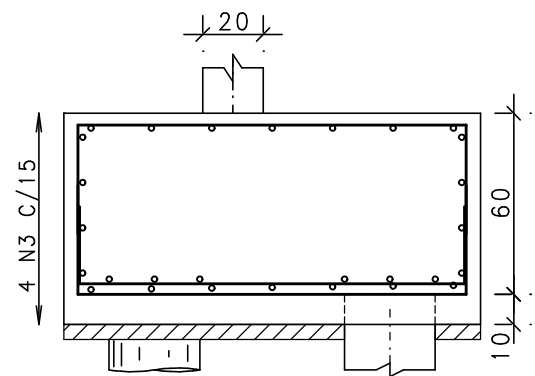
B1=B8=B16=B24
(ESCALA 1:25)



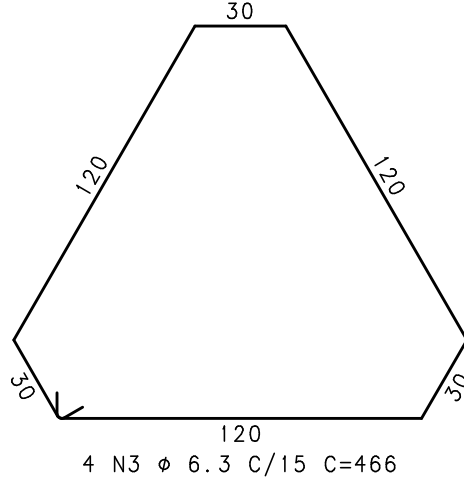
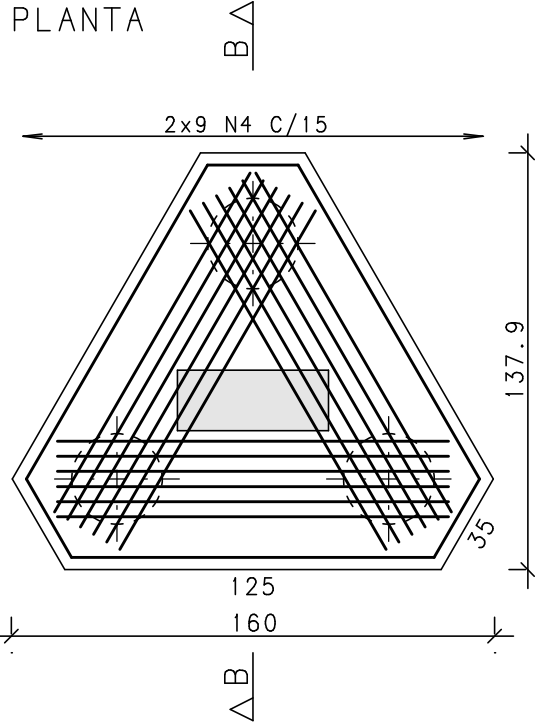
CORTE A - A



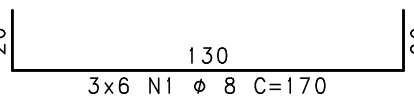
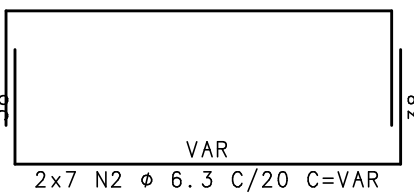
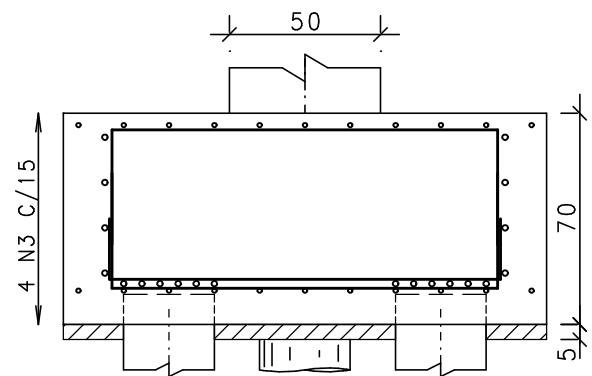
CORTE B - B



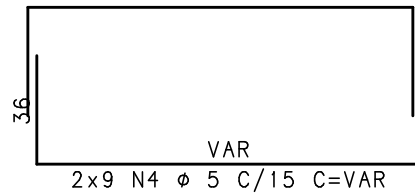
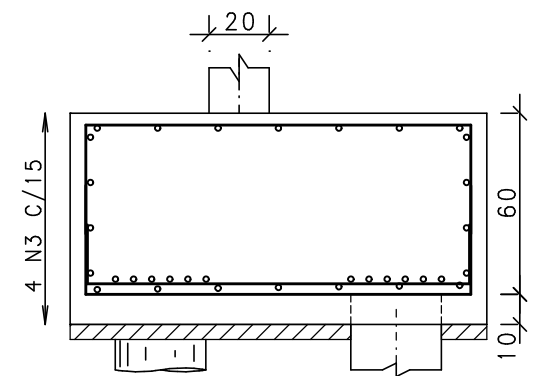
B25
(ESCALA 1:25)



CORTE A - A



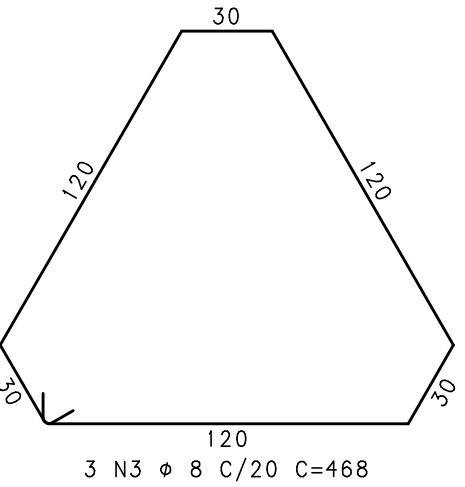
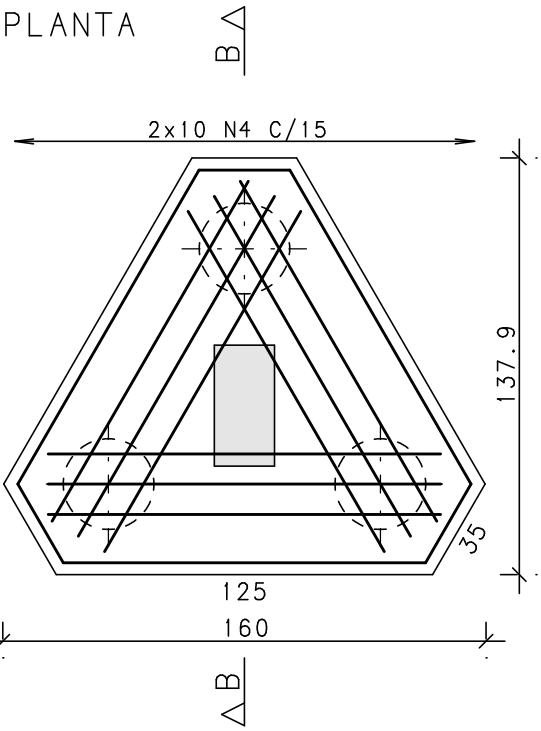
CORTE B - B



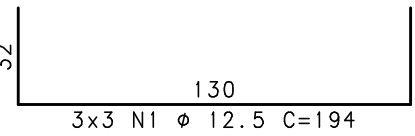
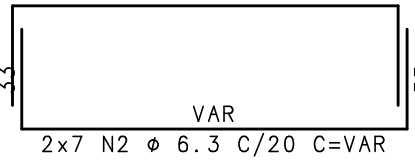
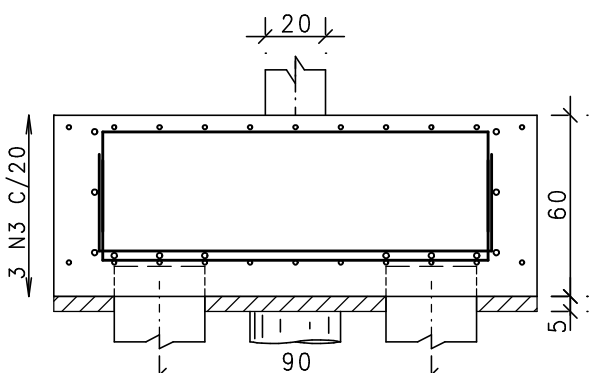
ACO	POS	BIT	QUANT	COMPRIMENTO	
				UNIT	TOTAL
		mm		cm	cm
B1=B8=B16=B24 (X4)					
50A	1	10	36	182	6552
50A	2	6.3	56	--VAR--	9800
60B	3	5	16	465	7440
60B	4	5	72	--VAR--	12240
B19					
50A	1	10	18	182	3276
50A	2	6.3	14	--VAR--	2450
50A	3	6.3	5	466	2330
60B	4	5	18	--VAR--	3060
B25					
50A	1	8	18	170	3060
50A	2	6.3	14	--VAR--	2450
50A	3	6.3	4	466	1864
60B	4	5	18	--VAR--	3060
B26					
50A	1	12.5	9	194	1746
50A	2	6.3	14	--VAR--	2310
50A	3	8	3	468	1404
60B	4	5	20	--VAR--	3040
B102					
50A	1	10	9	182	1638
50A	2	6.3	14	--VAR--	2450
60B	3	5	4	465	1860
60B	4	5	18	--VAR--	3060
B103=B104 (X2)					
50A	1	10	28	--VAR--	4900
50A	2	6.3	8	465	3720
60B	4	5	36	--VAR--	6120

RESUMO DE AÇO			
ACO	BIT	COMPR	PESO
	mm	m	kgf
60B	5	436	67
50A	6.3	286	70
50A	8	45	18
50A	10	147	91
50A	12.5	17	17
Peso Total			60B = 67 kgf
Peso Total			50A = 195 kgf

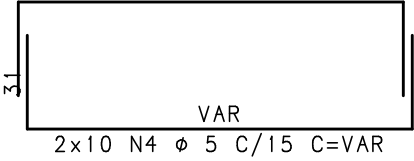
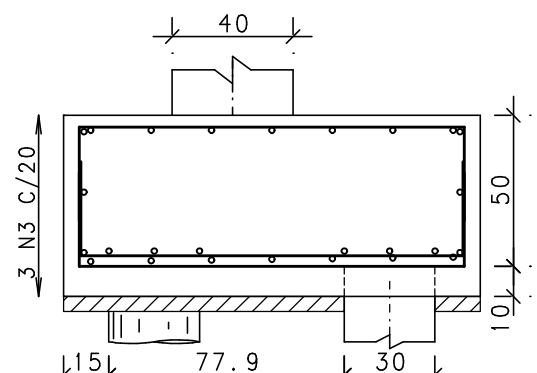
B26
(ESCALA 1:25)



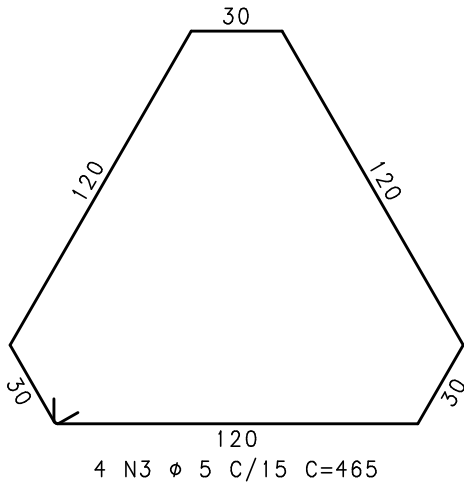
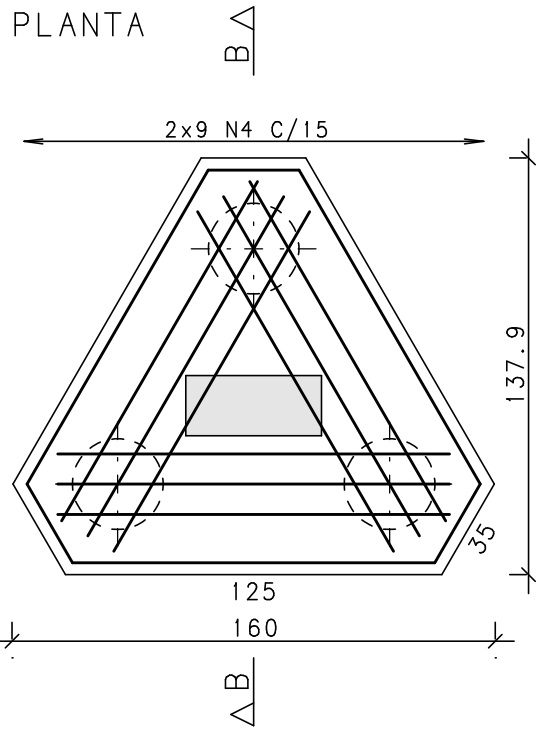
CORTE A - A



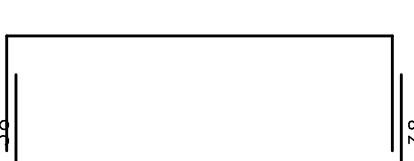
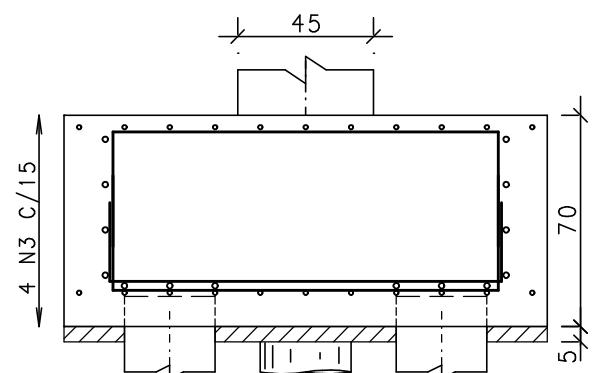
CORTE B - B



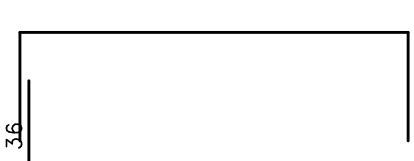
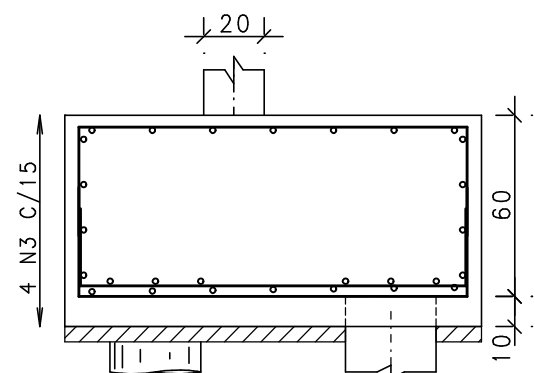
B102
(ESCALA 1:25)



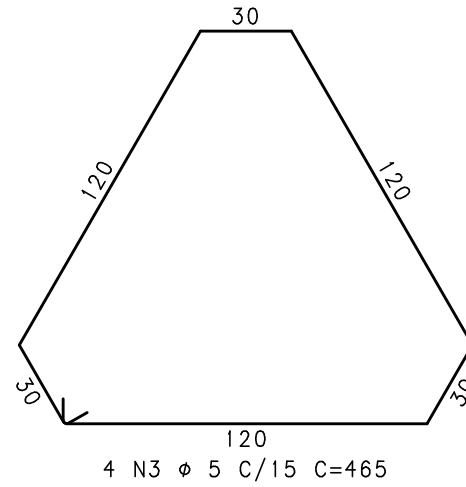
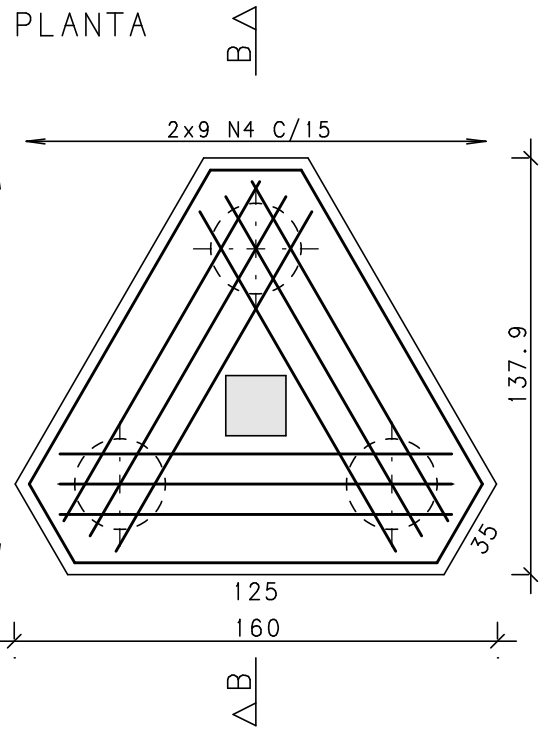
CORTE A - A



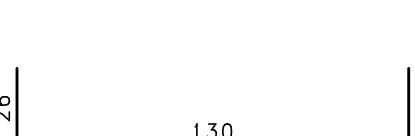
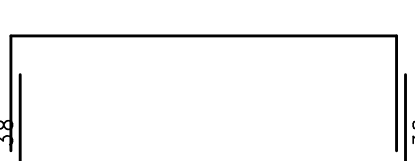
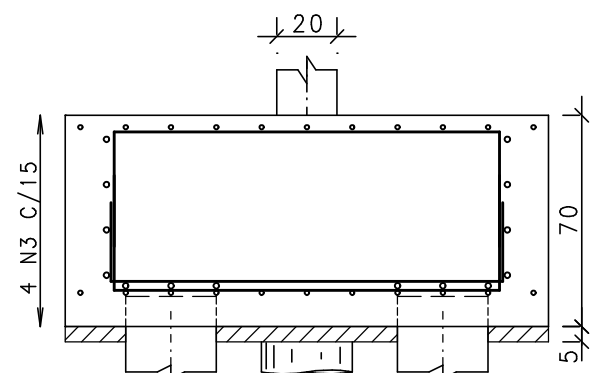
CORTE B - B



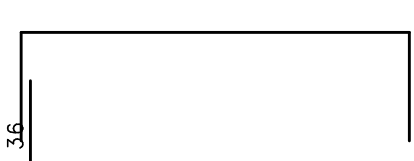
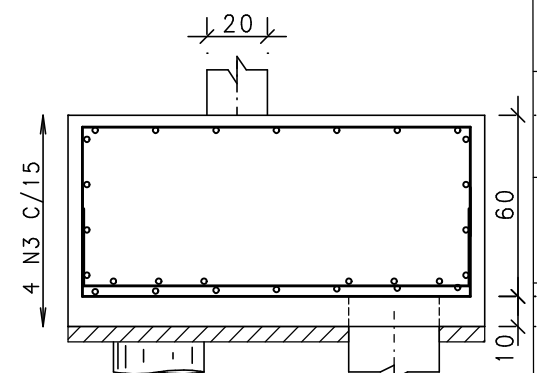
B103=B104
(ESCALA 1:25)



CORTE A - A



CORTE B - B



EXE						
EXE						
EXE						
TIPO	REV	DESCRIÇÃO		DESENHO	DATA	
REVISÕES						
MINISTÉRIO PÚBLICO DO ESTADO DE MINAS GERAIS SEDE DA PROMOTORIAS DE JUSTIÇA DE CAPELINHA						
ENDEREÇO RUA DAS HORTÊNCIAS, S/Nº, BAIRRO BOUGANVILLE, CAPELINHA, MG				ÁREA DO TERRENO: 1504,05 mÂ		
PROPRIETÁRIO: ESTADO DE MINAS GERAIS - VINCULADO À PROCURADORIA-GERAL DE JUSTIÇA DO ESTADO DE MINAS GERAIS				CNPJ: 20.971.057/0001-45		
PROJETO ESTRUTURAL						
IMPLANTAÇÃO - PADRÃO A5.2			ETAPA: EXECUTIVO		ÁREA CONSTRUÍDA: 921,74 mÂ	
UNIDADE RESPONSÁVEL DIRETORIA DE PROJETOS DE EDIFICAÇÕES/SUPERINTENDÊNCIA DE ENGENHARIA E ARQUITETURA						
RESPONSÁVEL TÉCNICO PELO PROJETO _____ SILVANA GUALTIERI DE CARVALHO					CREA: 63.117/D	
CONTEÚDO: Armação dos Blocos Parte 02/03 B1=B8=B16=B24 / B19 / B25 / B26 / B102 B103-B104					DATA: 16/10/2024	FOLHA:
					ESCALA: 1:25	13/40