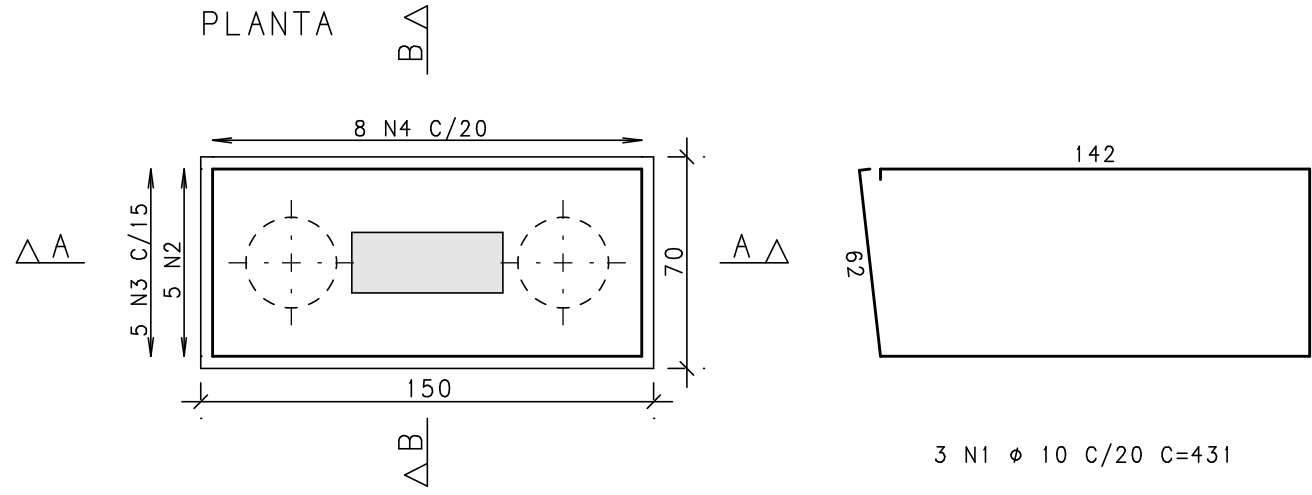
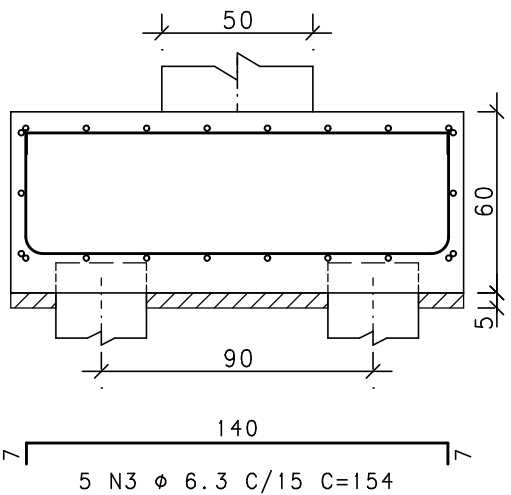


B17
(ESCALA 1:25)

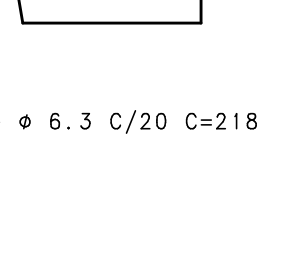
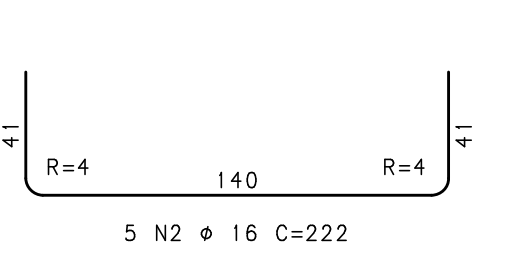
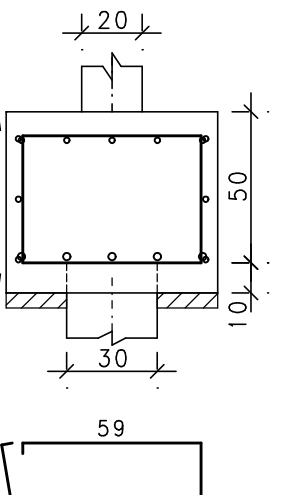
PLANTA



CORTE A - A

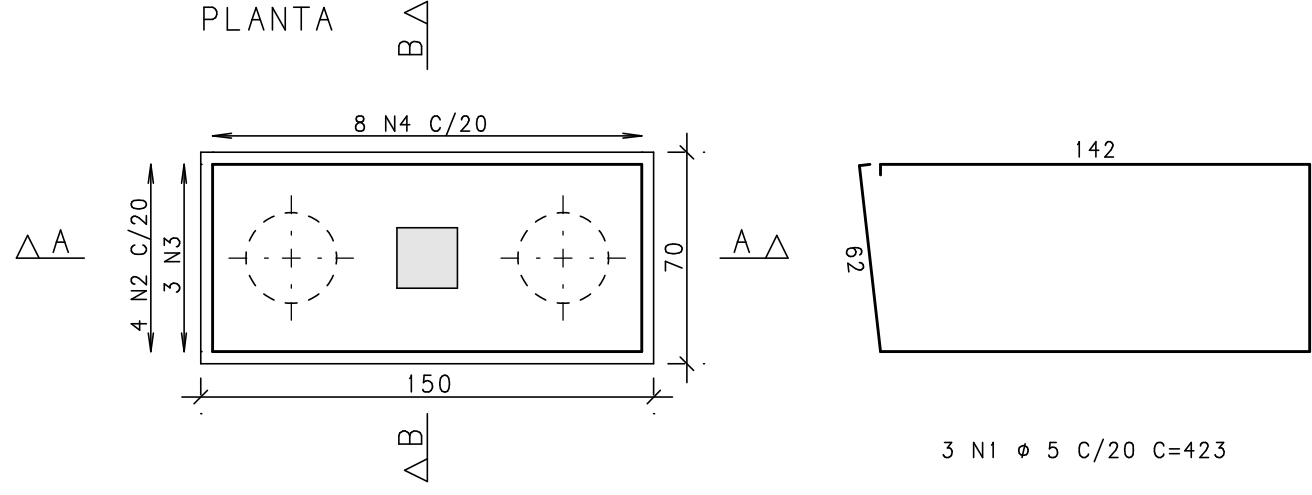


CORTE B - B

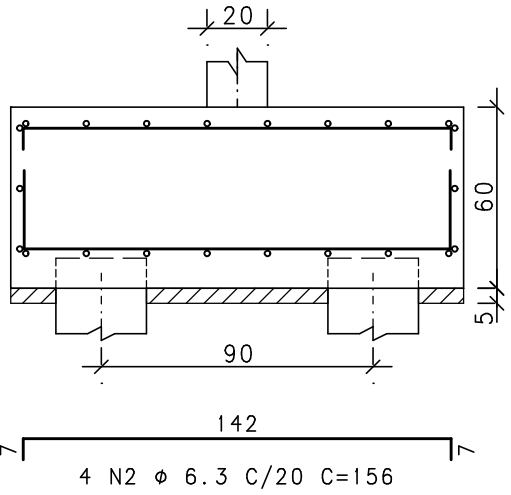


B101
(ESCALA 1:25)

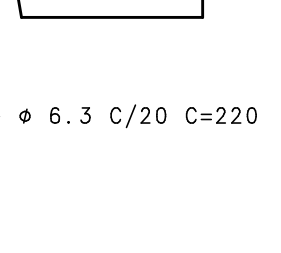
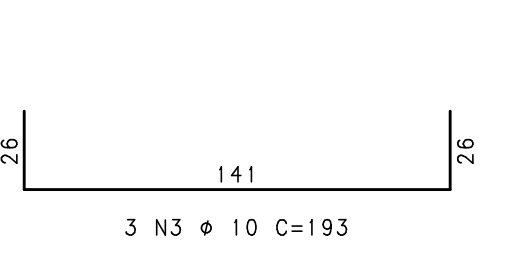
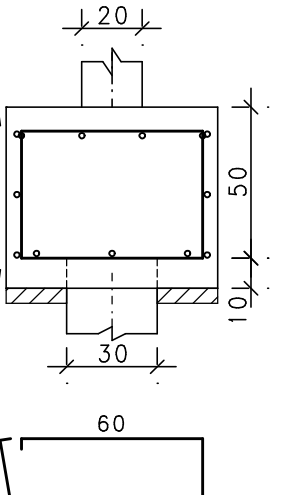
PLANTA



CORTE A - A

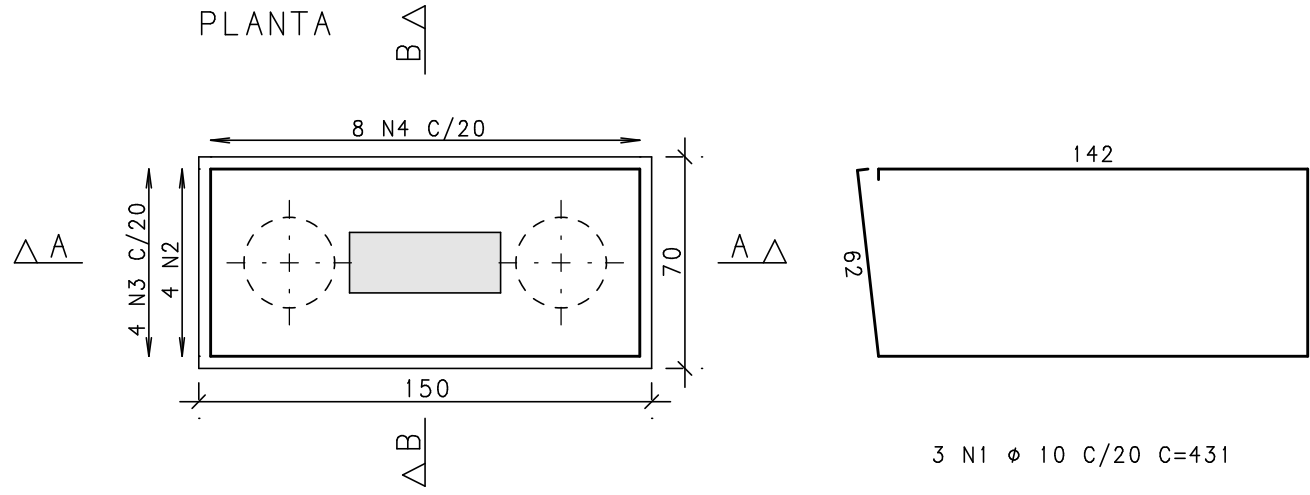


CORTE B - B

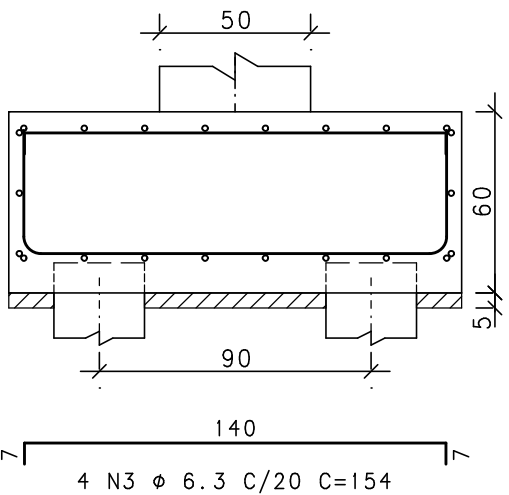


B4=B5=B6=B7
(ESCALA 1:25)

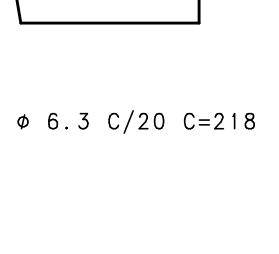
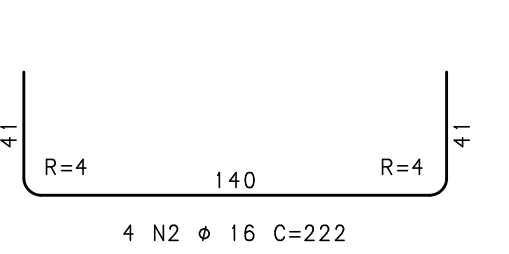
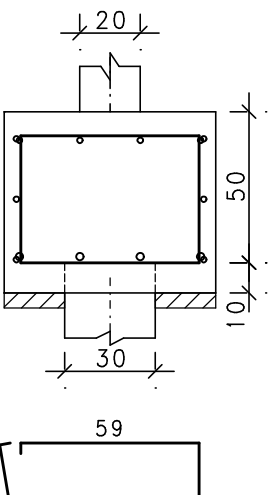
PLANTA



CORTE A - A

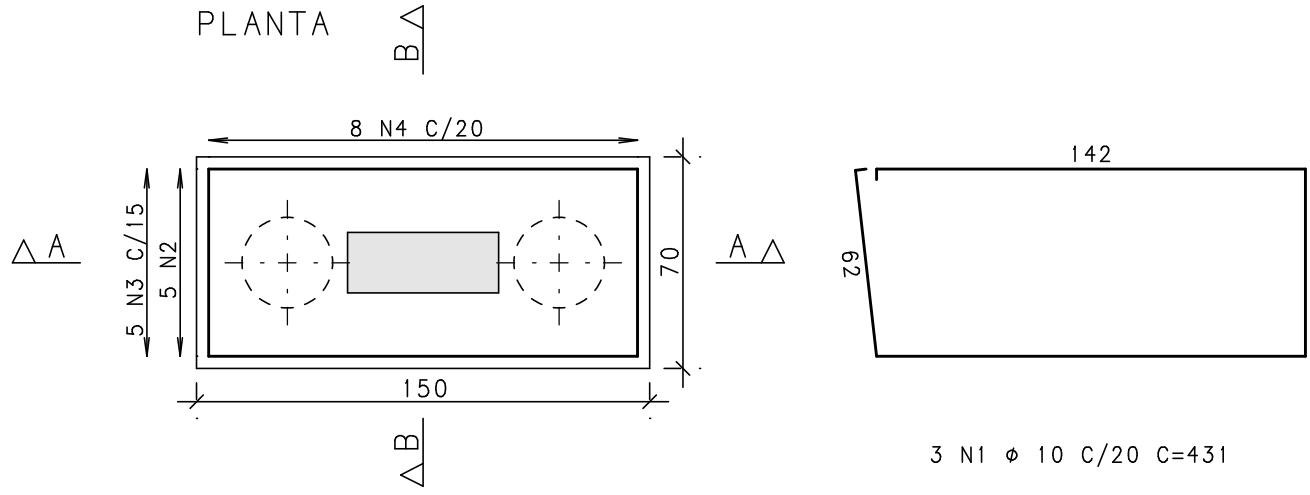


CORTE B - B

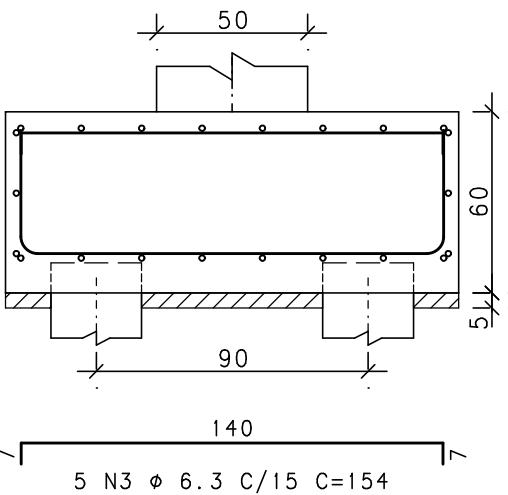


B9
(ESCALA 1:25)

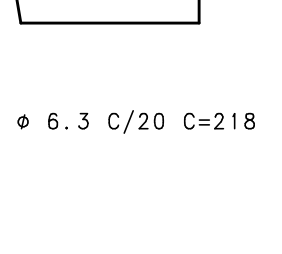
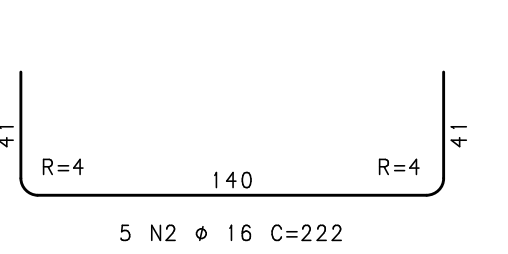
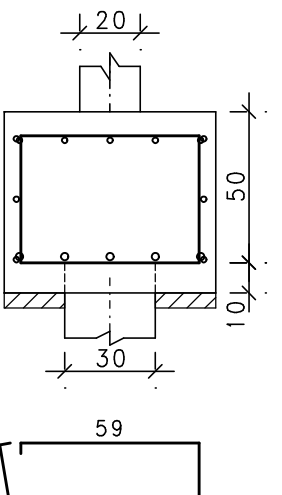
PLANTA



CORTE A - A

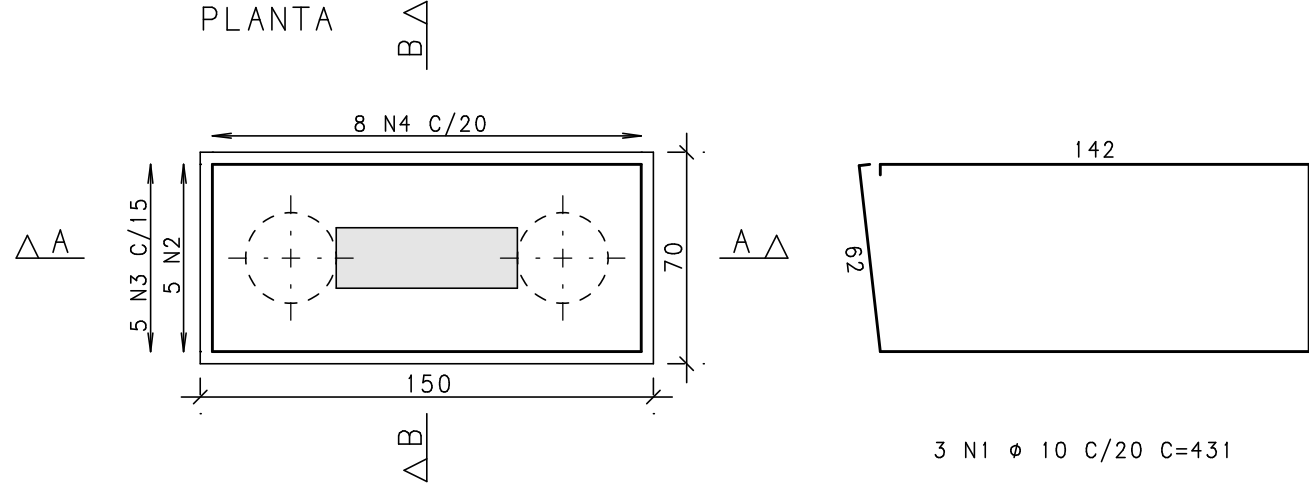


CORTE B - B

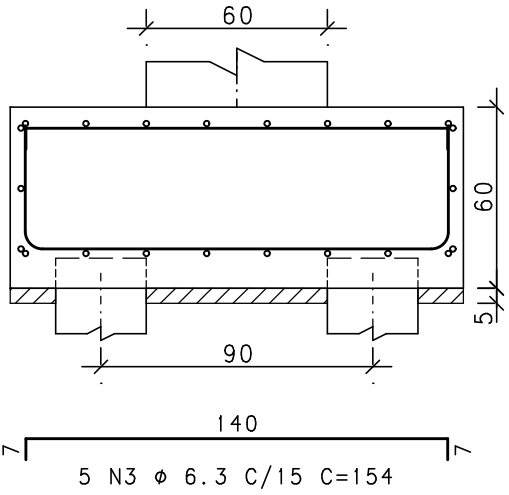


B20=B22
(ESCALA 1:25)

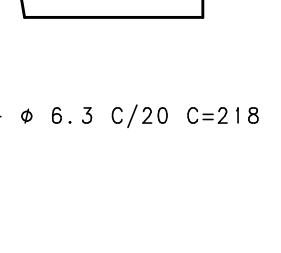
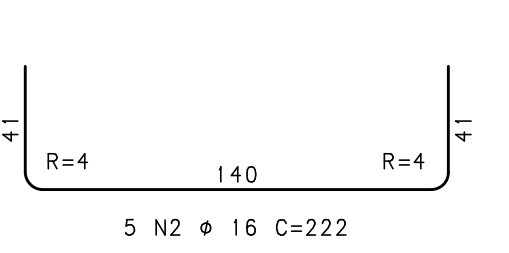
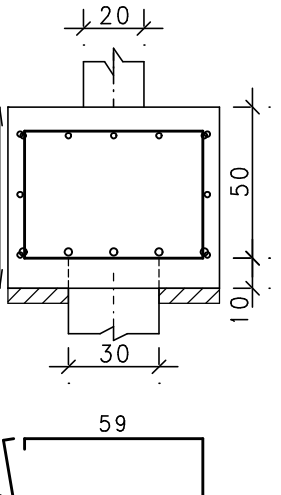
PLANTA



CORTE A - A

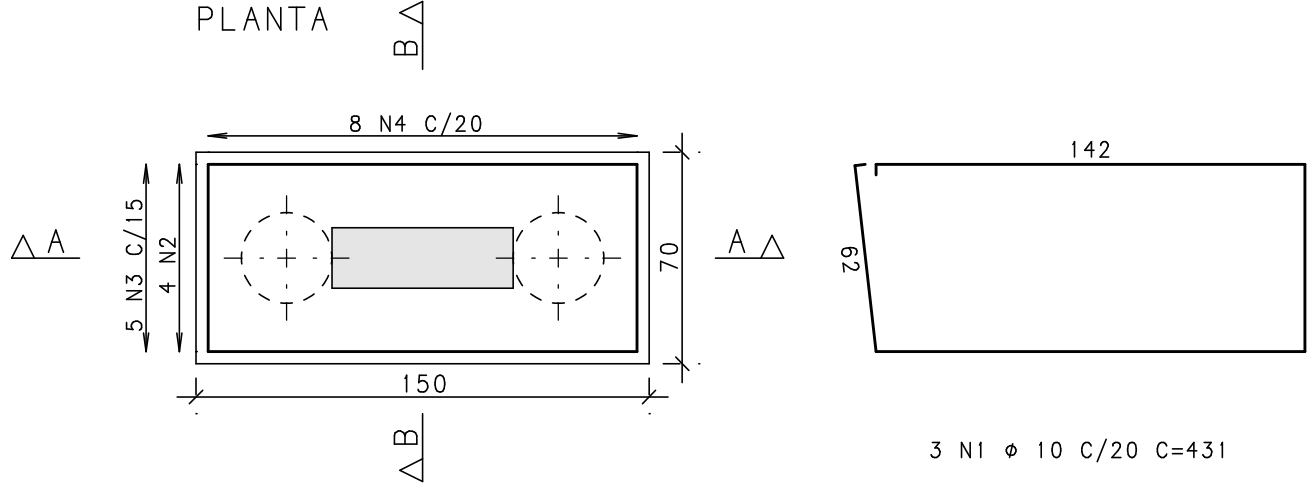


CORTE B - B

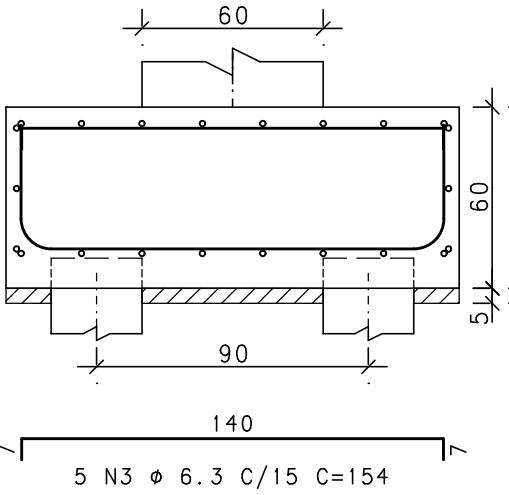


B21
(ESCALA 1:25)

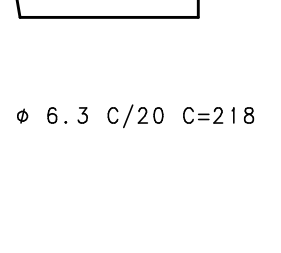
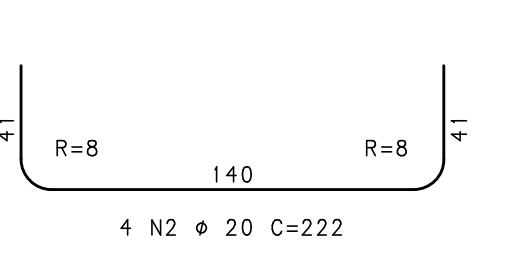
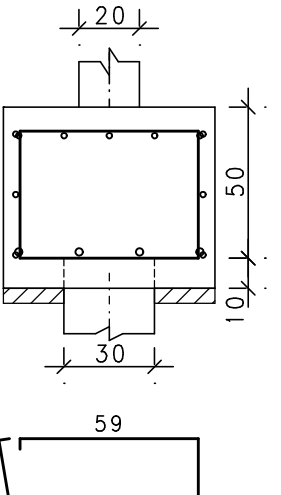
PLANTA



CORTE A - A



CORTE B - B



ACO	POS	BIT	QUANT	COMPRIMENTO		
				UNIT	TOTAL	
				mm	cm	cm
B4=B5=B6=B7 (X4)						
	50A	1	10	12	431	5172
	50A	2	16	16	222	3552
	50A	3	6.3	16	154	2464
	50A	4	6.3	32	218	6976
B9						
	50A	1	10	3	431	1293
	50A	2	16	5	222	1110
	50A	3	6.3	5	154	770
	50A	4	6.3	8	218	1744
B17						
	50A	1	10	3	431	1293
	50A	2	16	5	222	1110
	50A	3	6.3	5	154	770
	50A	4	6.3	8	218	1744
B20=B22 (X2)						
	50A	1	10	6	431	2586
	50A	2	16	10	222	2220
	50A	3	6.3	10	154	1540
	50A	4	6.3	16	218	3488
B21						
	50A	1	10	3	431	1293
	50A	2	20	4	222	888
	50A	3	6.3	5	154	770
	50A	4	6.3	8	218	1744
B101						
	60B	1	5	3	423	1269
	50A	2	6.3	4	156	624
	50A	3	10	3	193	579
	50A	4	6.3	8	220	1760

RESUMO DE AÇO			
ACO	BIT	COMPR	PESO
	mm	m	kgf
60B	5	13	2
50A	6.3	244	60
50A	10	122	75
50A	16	80	126
50A	20	9	22
Peso Total		60B =	2 kgf
Peso Total		50A =	283 kgf

EXE				
EXE				
EXE				
TIPO	REV	DESCRIÇÃO	DESENHO	DATA
REVISÕES				
MINISTÉRIO PÚBLICO DO ESTADO DE MINAS GERAIS SEDE DA PROMOTORIAS DE JUSTIÇA DE CAPELINHA				
ENDEREÇO RUA DAS HORTÊNCIAS, S/Nº, BAIRRO BOUGANVILLE, CAPELINHA, MG			ÁREA DO TERRENO: 1504,05 mÂ	
PROPRIETÁRIO: ESTADO DE MINAS GERAIS – VINCULADO À PROCURADORIA-GERAL DE JUSTIÇA DO ESTADO DE MINAS GERAIS			CNPJ: 20.971.057/0001-45	
PROJETO ESTRUTURAL				
IMPLANTAÇÃO – PADRÃO A5.2			ETAPA: EXECUTIVO	ÁREA CONSTRUIDA: 921,74 mÂ
UNIDADE RESPONSÁVEL DIRETORIA DE PROJETOS DE EDIFICAÇÕES/SUPERINTENDÊNCIA DE ENGENHARIA E ARQUITETURA				
RESPONSÁVEL TÉCNICO PELO PROJETO _____ SILVANA GUALTIERI DE CARVALHO				CREA: 63.117/D
CONTEÚDO: Armação dos Blocos Parte 03/03 B4=B5=B6=B7 / B9 / B17 / B20=B22 / B21 B20				DATA: 16/10/2024 ESCALA: 1:25
				FOLHA: 14/40