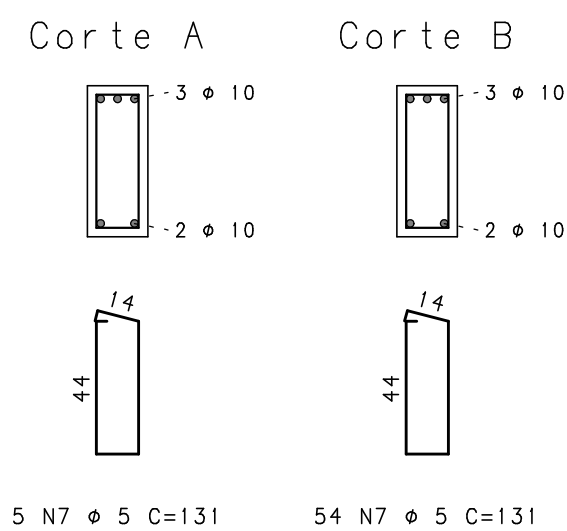
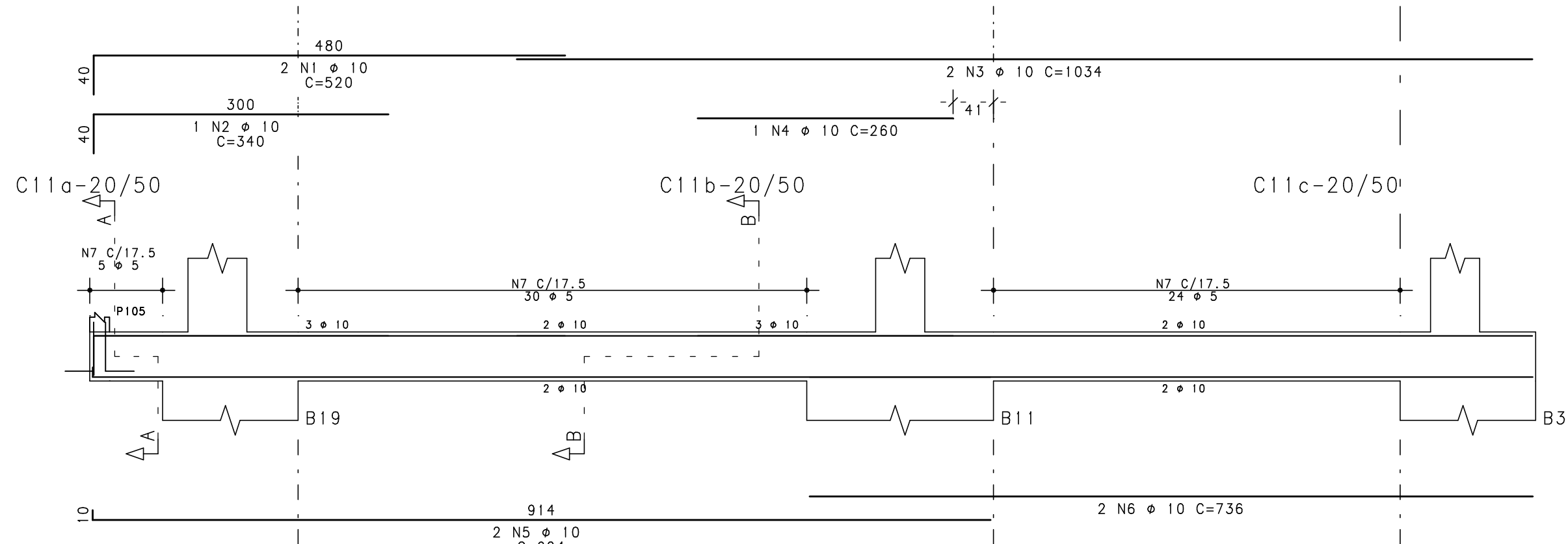
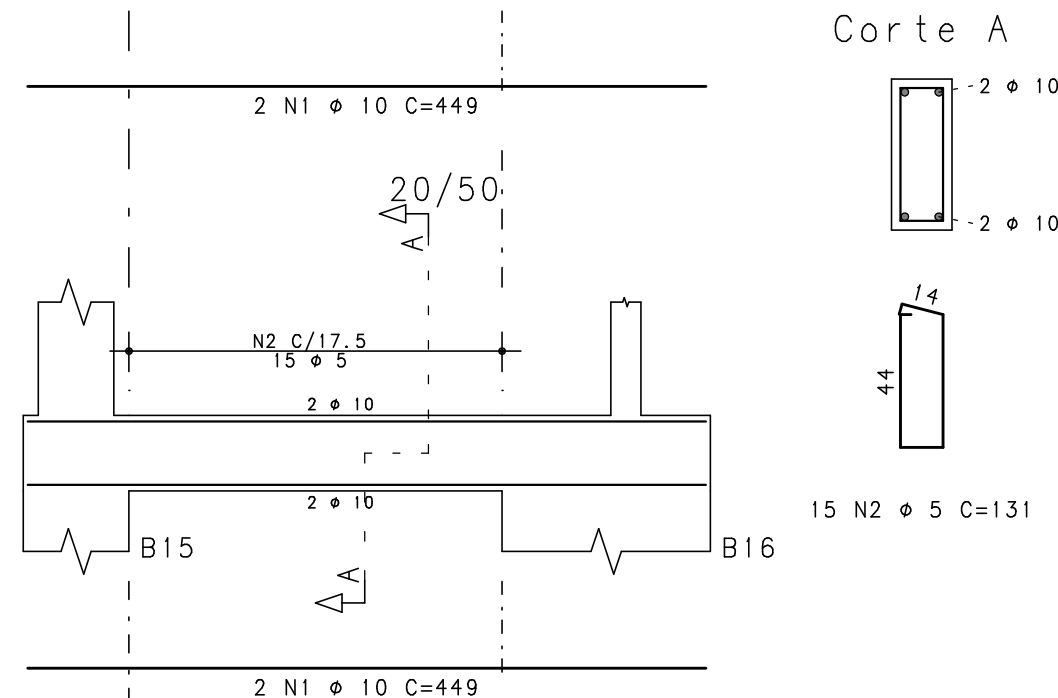


## C 1 1



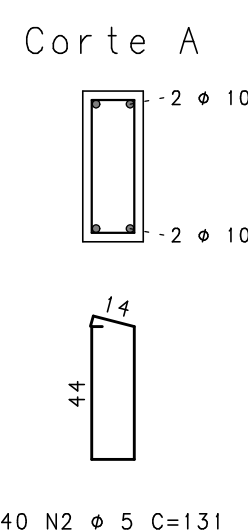
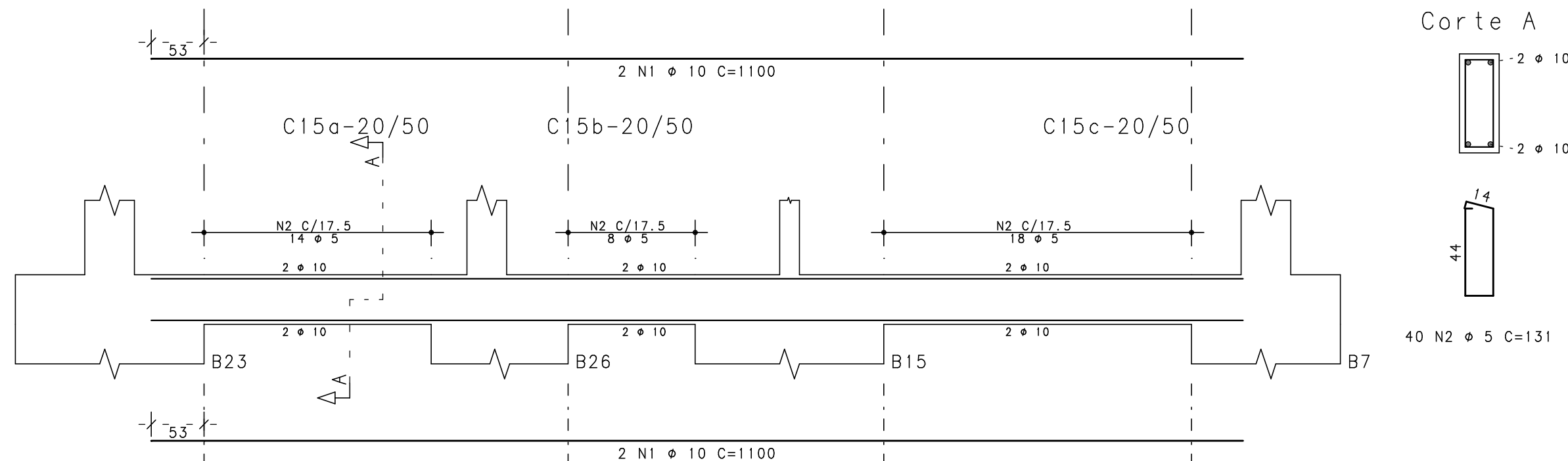
## C6



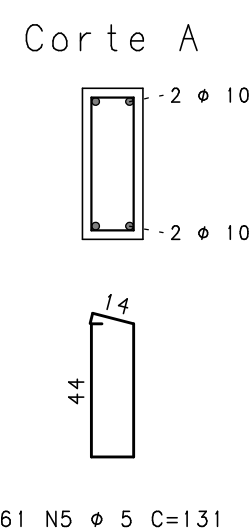
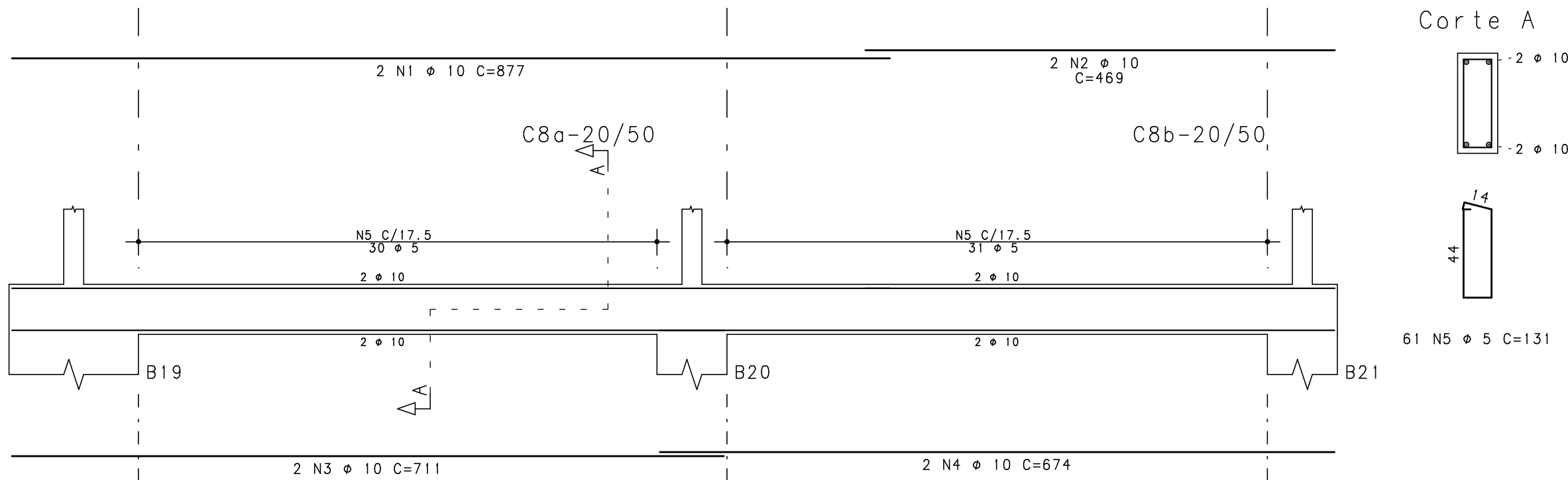
	ACO	POS	BIT	QUANT	COMPROMIMENTO	
					UNIT	TOTAL
			mm		cm	cm
C4	50A	1	10	2	845	1690
	50A	2	10	2	469	938
	50A	3	10	2	682	1364
	50A	4	10	2	674	1348
	60B	5	5	63	131	8253
C6	50A	1	10	4	449	1796
	60B	2	5	15	131	1965
C8	50A	1	10	2	877	1754
	50A	2	10	2	469	938
	50A	3	10	2	711	1422
	50A	4	10	2	674	1348
	60B	5	5	61	131	7991
C11	50A	1	10	2	520	1040
	50A	3	10	1	340	340
	50A	3	10	2	1034	2068
	50A	4	10	1	260	260
	50A	5	10	2	924	1848
C12	50A	6	10	2	736	1472
	60B	7	5	59	131	7729
	50A	1	10	2	527	1054
	50A	2	10	2	799	1598
	50A	3	10	2	859	1718
C13	50A	4	10	2	629	1258
	60B	5	5	47	131	6157
	50A	1	10	2	527	1054
	50A	2	10	2	799	1598
	50A	3	10	2	859	1718
C14	50A	4	10	2	629	1258
	60B	5	5	47	131	6157
	50A	1	10	2	530	1060
	50A	3	10	2	802	1604
	50A	3	10	2	865	1730
C15	50A	4	10	2	635	1270
	60B	5	5	47	131	6157
	50A	1	10	4	1100	4400
	60B	2	5	40	131	5240

RESUMO DE AÇO			
AÇO	BIT mm	COMPR m	PESO kgf
60B	5	496	76
50A	10	409	253
Peso Total	60B =		76 kgf
Peso Total	50A =		253 kgf

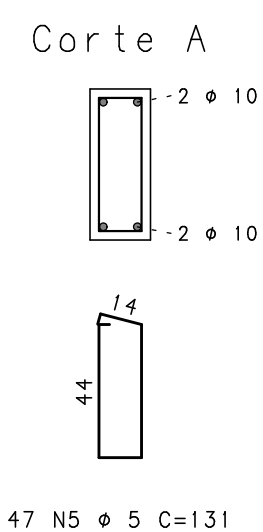
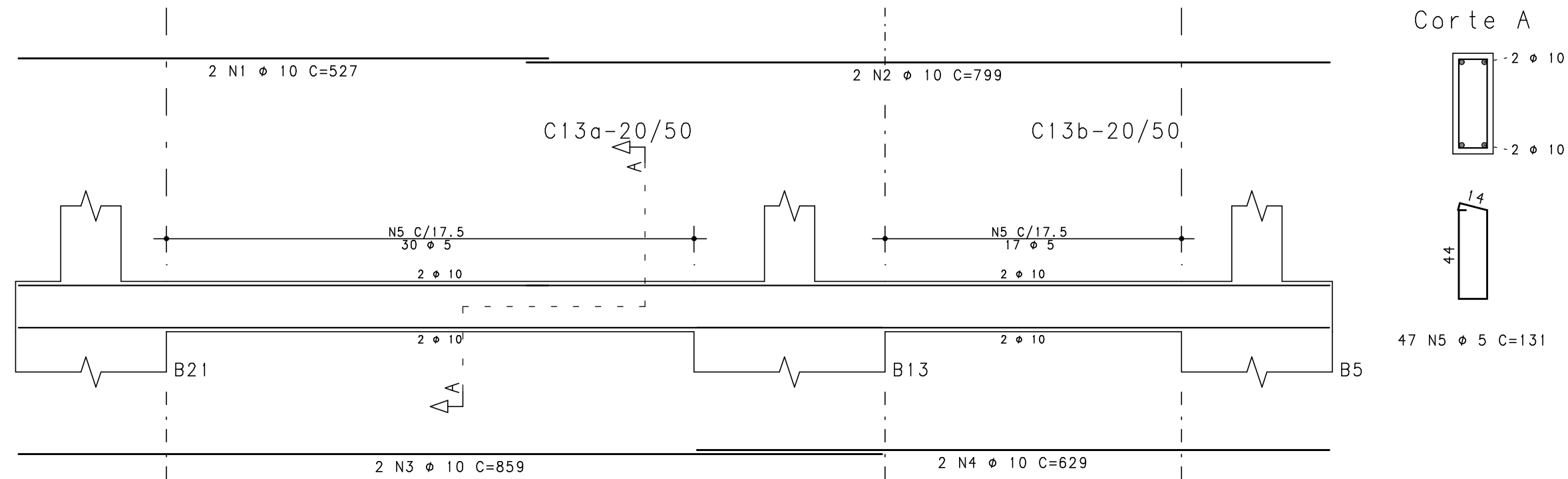
## C 15



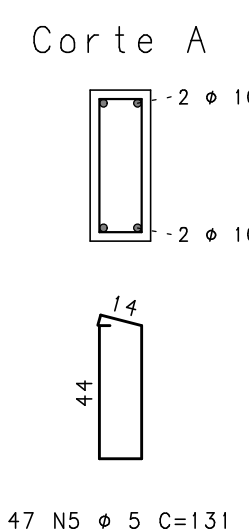
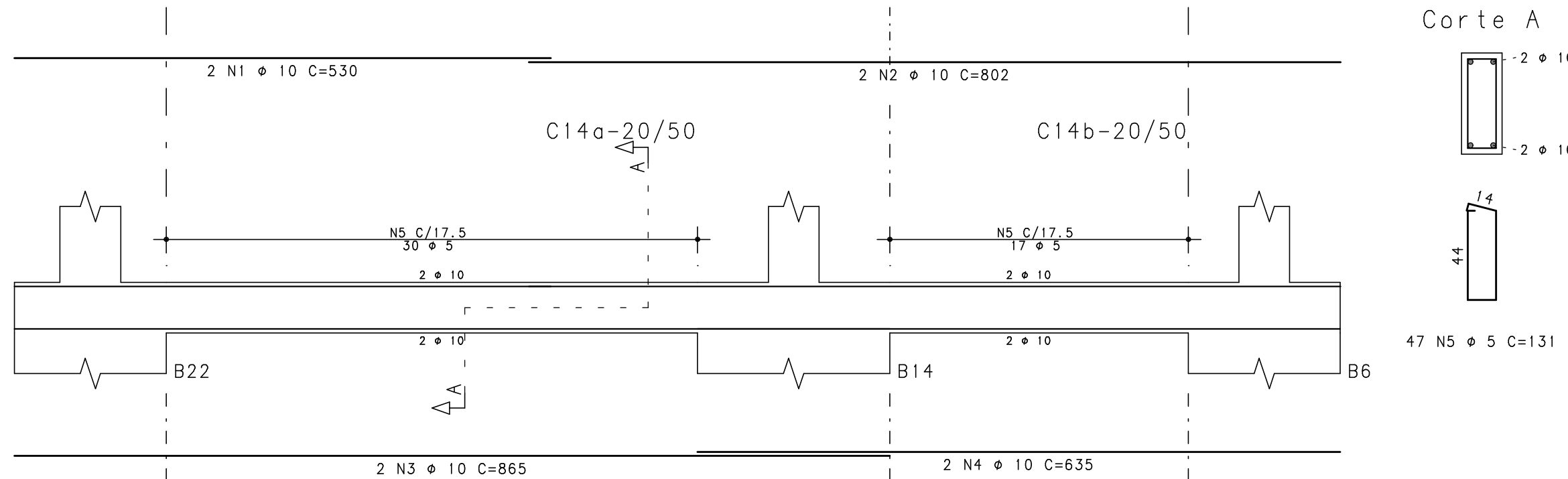
## C8



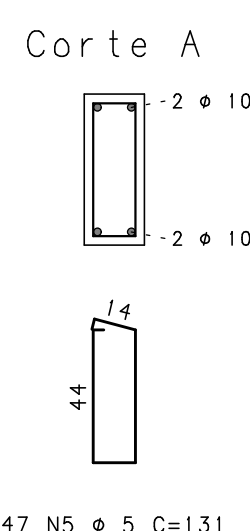
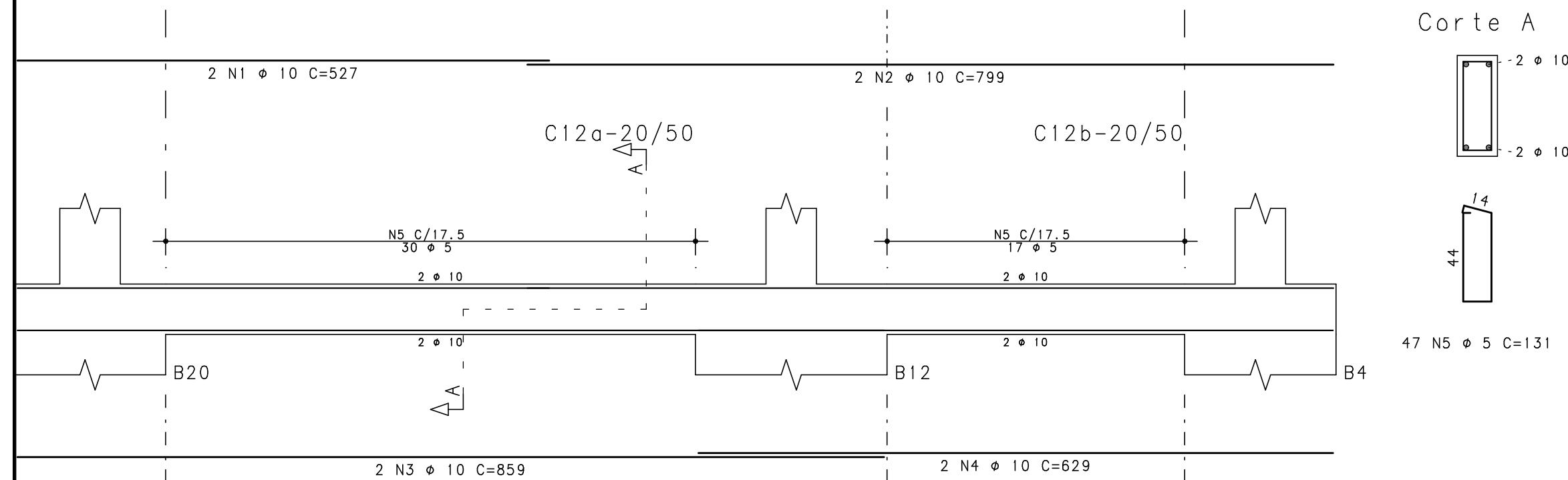
## C 1 3



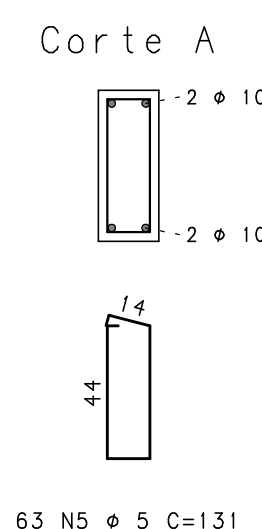
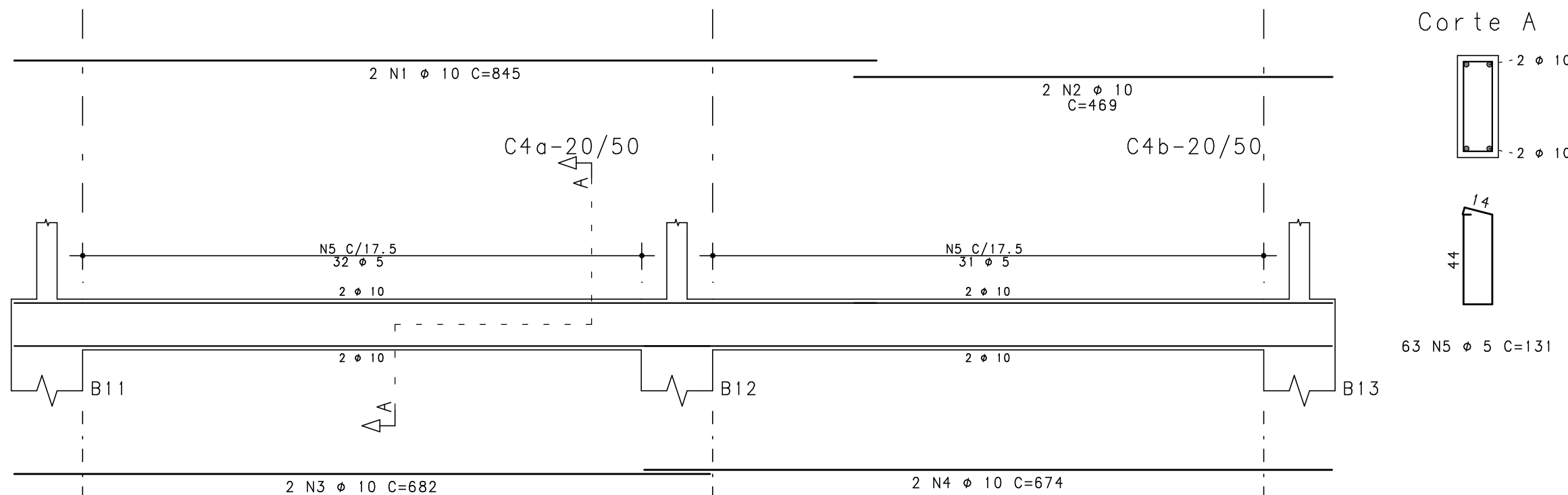
C 1 4



## C 1 2



## C 4



EXE			
EXE			
EXE			
TIPO	REV	DESCRIÇÃO	DESENHO DATA
REVISÕES			
<b>MINISTÉRIO PÚBLICO DO ESTADO DE MINAS GERAIS</b> <b>SEDE DA PROMOTORIA DE JUSTIÇA DE CAPELINHA</b>			
ENDEREÇO RUA DAS HORTÊNCIAS, S/Nº, BAIRRO BOUGANVILLE, CAPELINHA, MG			ÁREA DO TERRENO: 1504,05 mÂ
PROPRIETÁRIO: ESTADO DE MINAS GERAIS - VINCULADO À PROCURADORIA-GERAL DE JUSTIÇA DO ESTADO DE MINAS GERAIS			CNPJ: 20.971.057/0001-45
<b>PROJETO ESTRUTURAL</b>			
<b>IMPLANTAÇÃO - PADRÃO A5.2</b>		ETAPA: EXECUTIVO	ÁREA CONSTRUÍDA: 921,74 mÂ
UNIDADE RESPONSÁVEL DIRETORIA DE PROJETOS DE EDIFICAÇÕES/SUPERINTENDÊNCIA DE ENGENHARIA E ARQUITETURA			
RESPONSÁVEL TÉCNICO PELO PROJETO  SILVANA GUALTIERI DE CARVALHO			CREA: 63.117/D
CONTEÚDO: Armção das cintas Parte 01/03 <b>C4 / C6 / C8 / C11 / C12 / C13 / C14 / C15</b>			DATA: 16/10/2024 ESCALA: 1:50
			<b>15/40</b>