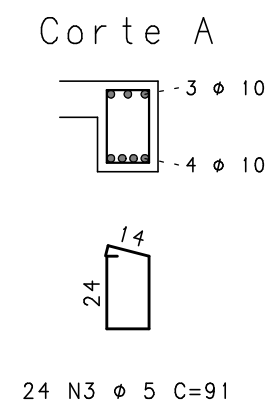
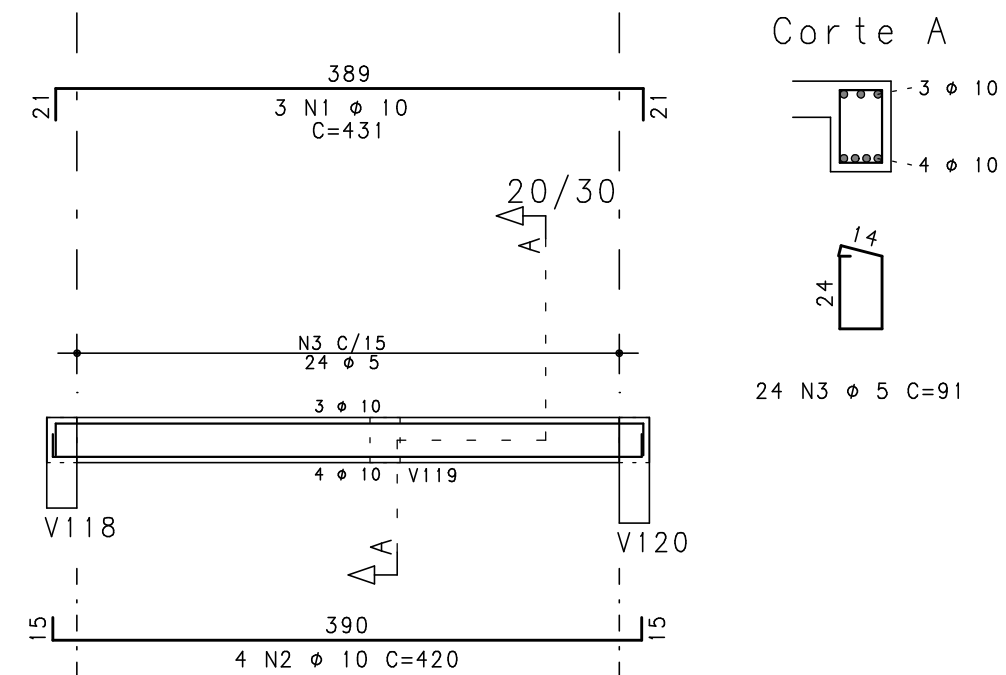
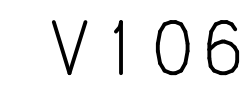
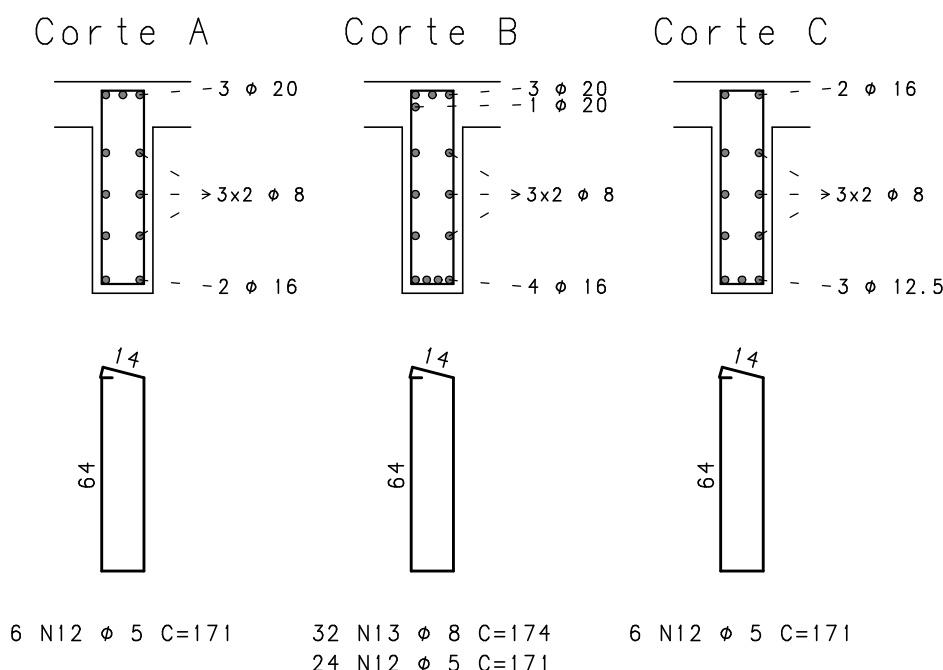
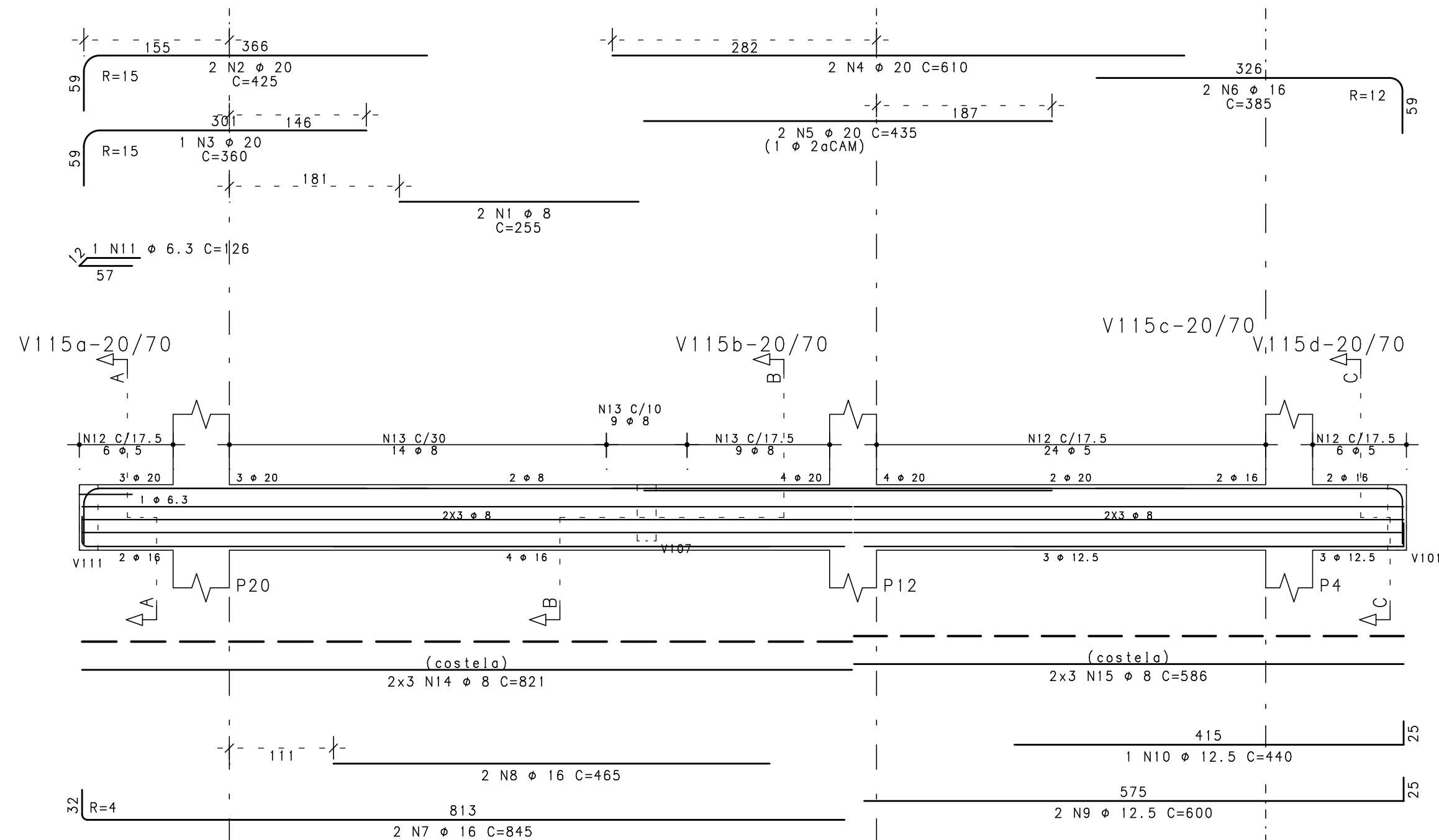
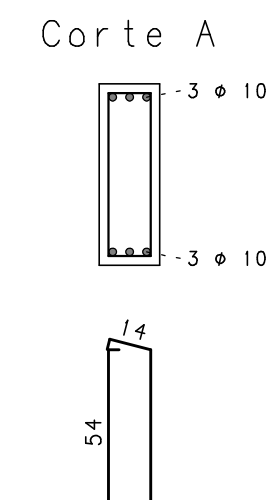
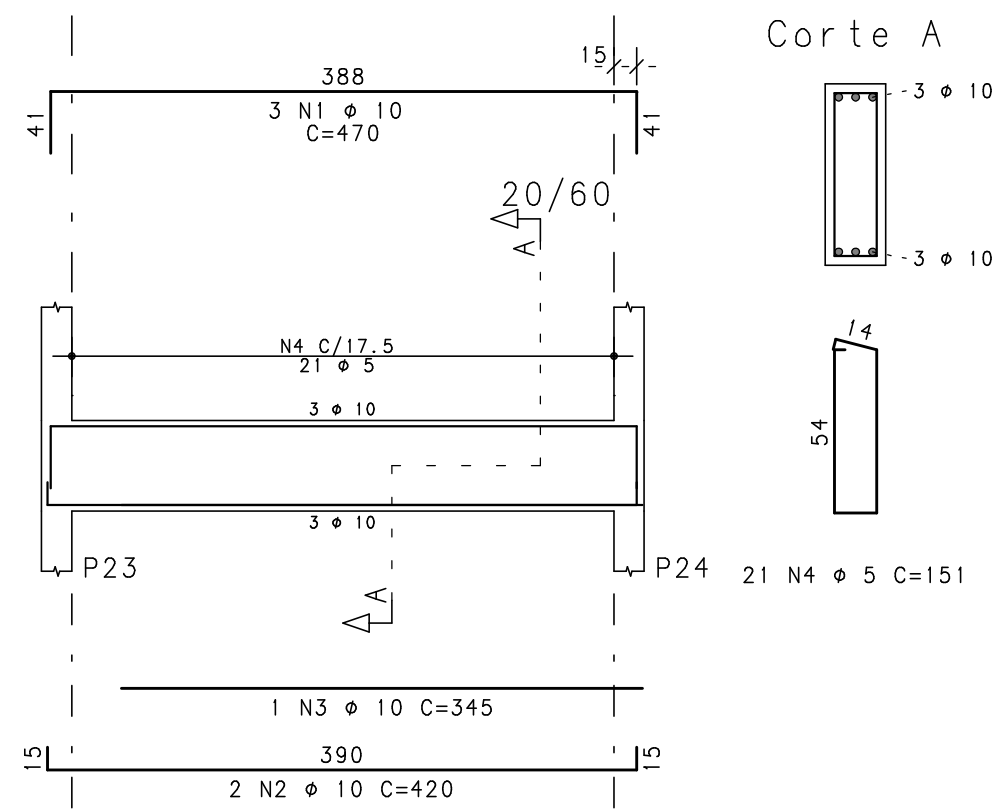
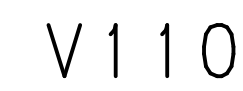
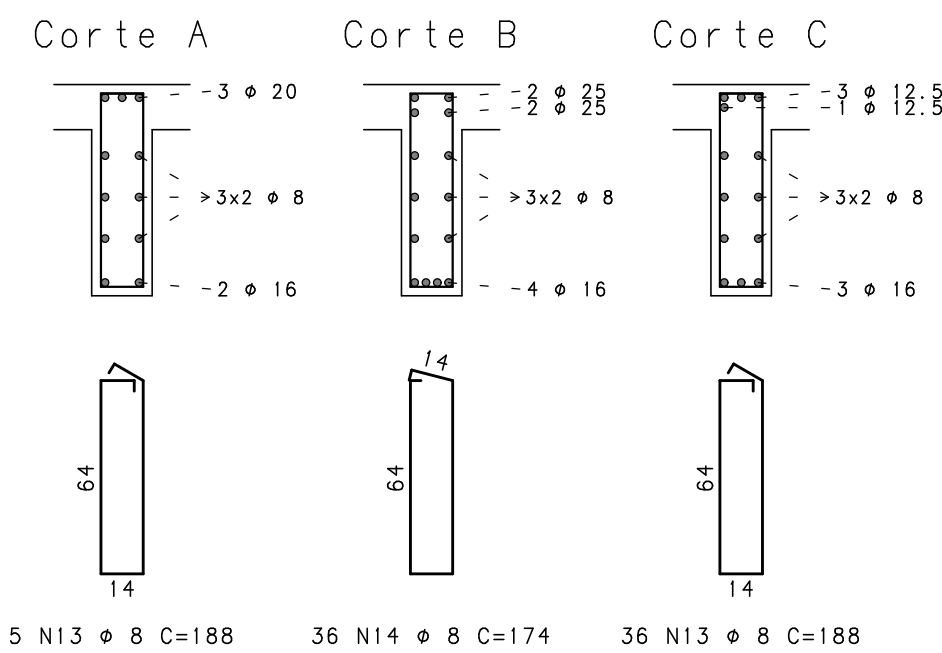
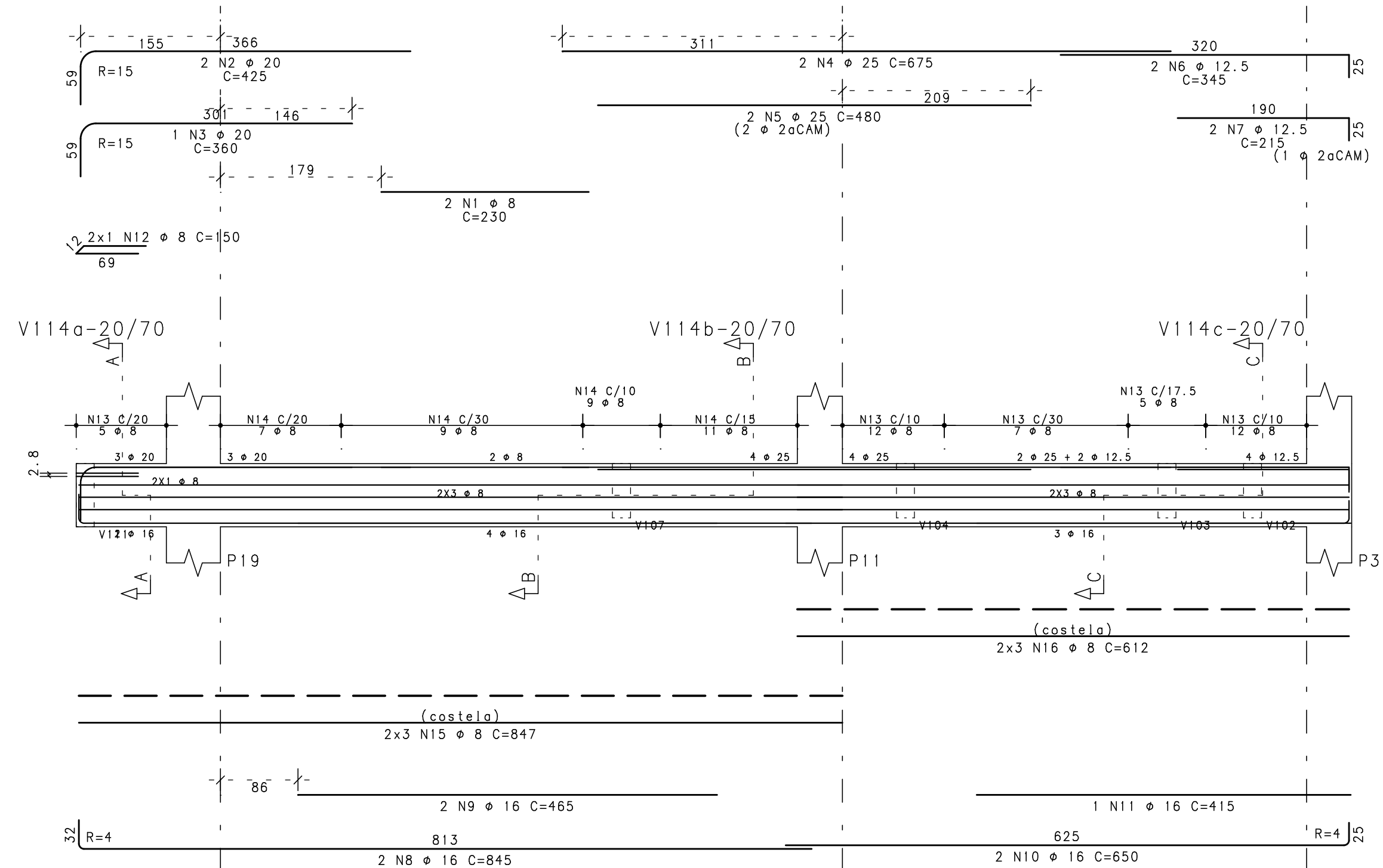


V 1 1 5



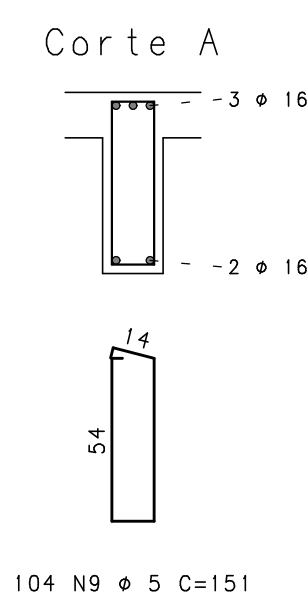
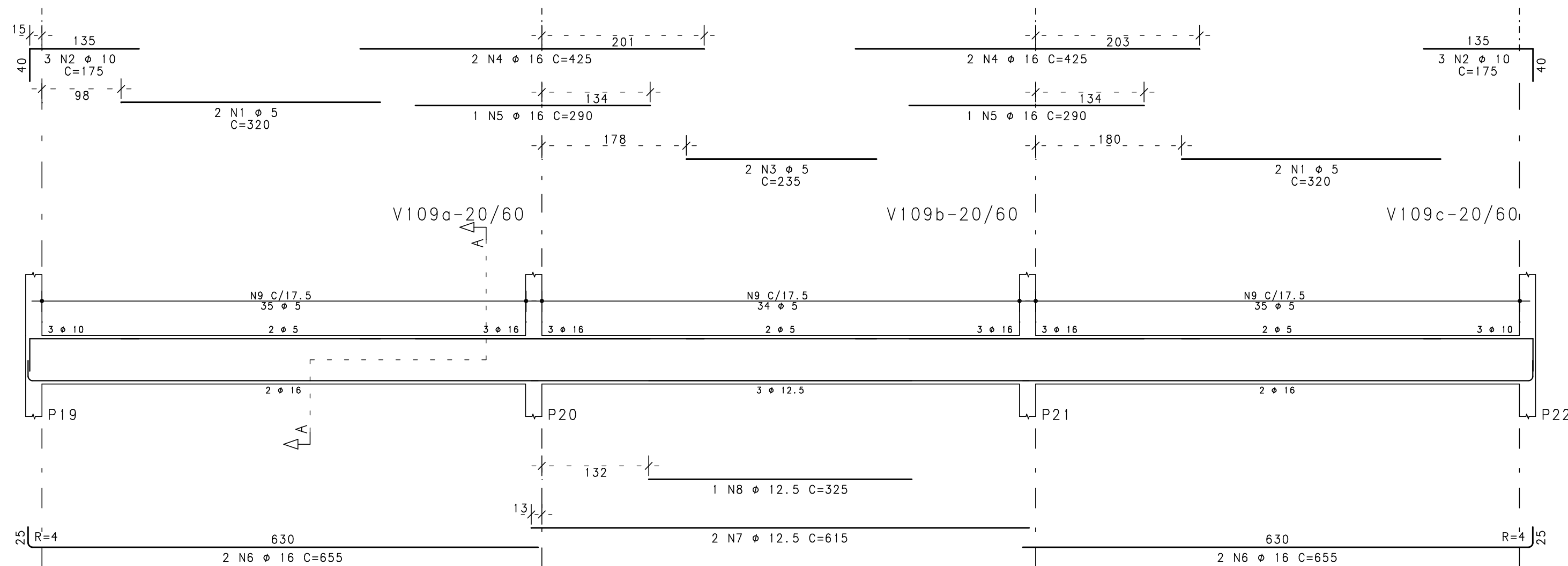
ACO		POS	BIT		QUANT	COMPIMENTO	
			mm			UNIT	TOTAL
						cm	cm
VI106		50A	1	10	3	431	1293
		50A	2	10	4	420	1680
		60B	3	5	24	91	2184
VI109		60B	1	5	4	320	1280
		50A	2	10	6	175	1050
		60B	3	5	2	235	470
		50A	4	16	4	425	1700
		50A	5	16	2	230	580
		50A	6	16	4	655	2620
		50A	7	12,5	2	615	1230
		50A	8	12,5	1	325	325
		60B	9	5	104	151	15704
VI110		50A	1	10	3	470	1410
		50A	2	10	2	420	840
		50A	3	10	1	345	345
		60B	4	5	21	151	3171
VI114		50A	1	8	2	230	460
		50A	2	20	2	425	850
		50A	3	20	1	360	360
		50A	4	25	2	675	1350
		50A	5	25	2	480	960
		50A	6	12,5	2	345	690
		50A	7	12,5	2	215	430
		50A	8	16	2	845	1690
		50A	9	16	2	465	930
		50A	10	16	2	650	1300
		50A	11	16	1	415	415
		50A	12	8	2	150	300
		50A	13	8	1	178	356
		50A	14	8	36	174	6264
		50A	15	8	6	847	5082
	50A	16	8	6	812	3672	
VI115		50A	1	8	2	255	510
		50A	2	20	2	425	850
		50A	3	20	1	360	360
		50A	4	20	2	610	1220
		50A	5	20	2	435	870
		50A	6	16	2	385	770
		50A	7	16	2	445	1690
		50A	8	16	2	465	930
		50A	9	12,5	2	600	1200
		50A	10	12,5	1	440	440
		50A	11	6,3	1	126	126
		60B	12	5	36	171	6156
		50A	13	13	8	32	174
		50A	14	8	1	821	4926
		50A	15	8	6	586	3518

V 1 1 4



RESUMO DE AÇO				
ACO	BIT	COMPR	PESO	
	mm	m		kgf
60B	5	290		45
50A	6,3	1		0
50A	8	380		150
50A	10	66		41
50A	12,5	43		42
50A	16	126		99
50A	20	45		111
50A	25	23		89
Peso Total	60B =		45	kgf
Peso Total	50A =		632	kgf

## V 1 0 9



EXE				
EXE				
EXE				
TIPO	REV	DESCRIÇÃO	DESENHO	DATA
REVISÕES				
<b>MINISTÉRIO PÚBLICO DO ESTADO DE MINAS GERAIS</b> <b>SEDE DA PROMOTORIAS DE JUSTIÇA DE CAPELINHA</b>				
ENDEREÇO RUA DAS HORTÊNCIAS, S/Nº, BAIRRO BOUGANVILLE, CAPELINHA, MG			ÁREA DO TERRENO: 1504,05 mÃ	
PROPRIETÁRIO: ESTADO DE MINAS GERAIS – VINCULADO À PROCURADORIA-GERAL DE JUSTIÇA DO ESTADO DE MINAS GERAIS			CNPJ: 20.971.057/0001-45	
<b>PROJETO ESTRUTURAL</b>				
<b>IMPLANTAÇÃO – PADRÃO A5.2</b>			ETAPA: EXECUTIVO	ÁREA CONSTRUÍDA: 921,74 mÃ
UNIDADE RESPONSÁVEL DIRETORIA DE PROJETOS DE EDIFICAÇÕES/SUPERINTENDÊNCIA DE ENGENHARIA E ARQUITETURA				
RESPONSÁVEL TÉCNICO PELO PROJETO  SILVANA GUALTIERI DE CARVALHO			CREA: 63.117/D	
CONTEÚDO: Armazém de vigas do térreo Parte 03/05 V106 / V109 / V110 / V114 / V115			DATA: 17/10/2024  ESCALA: 1: 50	FOLHA:   <b>33/40</b>